

## 6. INFORMATION ON OUR GROUP

### 6.1 OUR COMPANY

Our Company was incorporated in Malaysia under the Companies Act 1965 on 2 May 2013 as a private limited company under the name of Platinum Perspective Sdn Bhd and is deemed registered under the Act. Our Company subsequently changed our name to Big Pharmacy Holdings Sdn Bhd on 12 November 2013 and to Big Caring Group Sdn Bhd on 3 January 2024. On 6 March 2026, our Company was converted into a public limited company and assumed our present name of Big Caring Group Bhd to facilitate our Listing.

The principal activity of our Company is investment holding and through our Subsidiaries, we are mainly involved in the retail sale of pharmaceutical, healthcare, beauty, general merchandise and other related products. The principal activities of our Subsidiaries and Associates are set out in Section 6.3 of this Prospectus.

#### 6.1.1 Share capital

As at the LPD, our issued share capital is RM251,606,291 comprising 6,791,288,680 Shares. Save as set out below, there has been no changes in our issued share capital for the Financial Years Under Review and from 1 July 2025 up to the [LPD]:

Date of allotment	No. of Shares allotted	Consideration	Cumulative issued share capital	
			No. of Shares	RM
29 December 2023	28,300,000 <sup>(1)</sup>	Cash	163,500,000	238,414,515
30 June 2025	5,178,325 <sup>(2)</sup>	Cash	168,678,325	246,583,316
30 June 2025	1,103,892 <sup>(2)</sup>	Cash	169,782,217	251,606,291
[●]	6,621,506,463 <sup>(3)</sup>	Otherwise than cash	6,791,288,680	251,606,291

#### Notes:

- (1) Pursuant to the issuance of new Shares to UPSB and IPSB to raise proceeds amounting to RM210.0 million to part fund the Caring Acquisition.
- (2) Pursuant to the exercise of options by the ESOS Grantees resulting in the issuance of (i) 5,178,325 new Shares at an exercise price RM0.97 per Share; and (ii) 1,103,892 new Shares at an exercise price of RM7.40 per Share.
- (3) Pursuant to the Subdivision as set out in Section 6.1.2 of this Prospectus.

As at the LPD, there are no discounts, special terms or instalment payment terms applicable to the payment of the consideration for any allotments of our Shares. In addition, there are no outstanding warrants, options, convertible securities or uncalled capital in our Company.

Upon the completion of our IPO, our enlarged share capital will increase from RM251,606,291 to RM[●] comprising 7,381,835,680 Shares. Please refer to Section 4.1.5 of this Prospectus for further details.

**6. INFORMATION ON OUR GROUP (Cont'd)****6.1.2 Subdivision**

On [●], our Company completed the subdivision of 169,782,217 existing Shares into 6,791,288,680 Shares to increase the number of our issued Shares to facilitate our IPO and Listing. The effective shareholding of our existing shareholders in our Company before and after the Subdivision is the same, and is as follows:

	Before the Subdivision		After the Subdivision	
	No. of Shares	% <sup>(1)(3)</sup>	No. of Shares	% <sup>(2)(3)</sup>
UPSB	72,776,114	42.9	2,911,044,560	42.9
IPSB	57,269,953	33.7	2,290,798,120	33.7
Lee Meng Chuan	13,520,000	8.0	540,800,000	8.0
Lim Sin Yin	6,760,000	4.0	270,400,000	4.0
Low Youk Chu	1,848,860	1.1	73,954,400	1.1
Lim Bah Kaw	1,848,860	1.1	73,954,400	1.1
Tey Piow Fee	1,493,960	0.9	59,758,400	0.9
Chong Mu Sir	1,493,960	0.9	59,758,400	0.9
Tey Peyau Ek	1,142,440	0.7	45,697,600	0.7
See Chee Choon	1,182,340	0.7	47,293,600	0.7
Lim Shin Jeng	1,129,512	0.7	45,180,480	0.7
Tey Piow Yan	922,740	0.5	36,909,600	0.5
Lim Sze Ung	878,800	0.5	35,152,000	0.5
Tey Sew	834,860	0.5	33,394,400	0.5
Soh Jau Rhen	373,844	0.2	14,953,760	0.2
Lee Sheen Mei	312,428	0.2	12,497,120	0.2
Shin Kam Mun	293,300	0.2	11,732,000	0.2
Lim Shin Yen	131,780	0.1	5,271,200	0.1
Loh Yen Yee	87,900	0.1	3,516,000	0.1
Wong Wai Hou	77,900	*	3,116,000	*
380 ESOS Grantees	5,402,666	3.2	216,106,640	3.2
	<b>169,782,217</b>	<b>100.0</b>	<b>6,791,288,680</b>	<b>100.0</b>

**Notes:**

\* Negligible

(1) Based on 169,782,217 issued Shares as at the LPD.

(2) Based on our enlarged 6,791,288,680 issued Shares after the Subdivision.

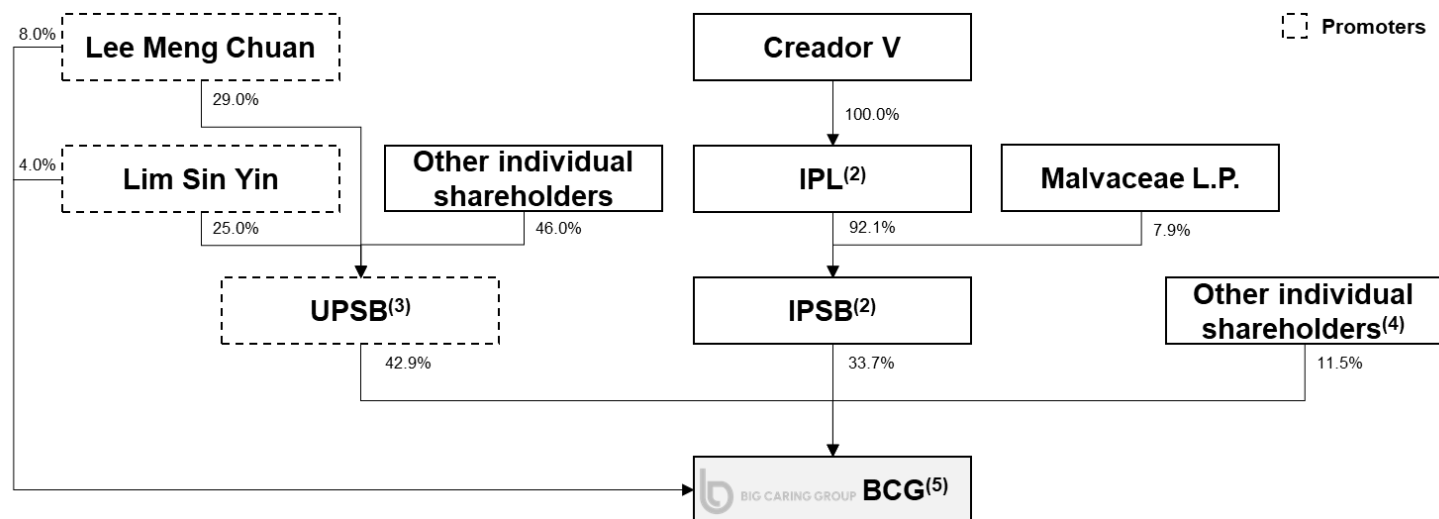
(3) Does not add up to 100.0% due to rounding.

6. INFORMATION ON OUR GROUP (Cont'd)

6.2 OUR CORPORATE AND SHAREHOLDING STRUCTURE

6.2.1 Our shareholding structure

As at the LPD and after the Subdivision, but before our IPO<sup>(1)</sup>

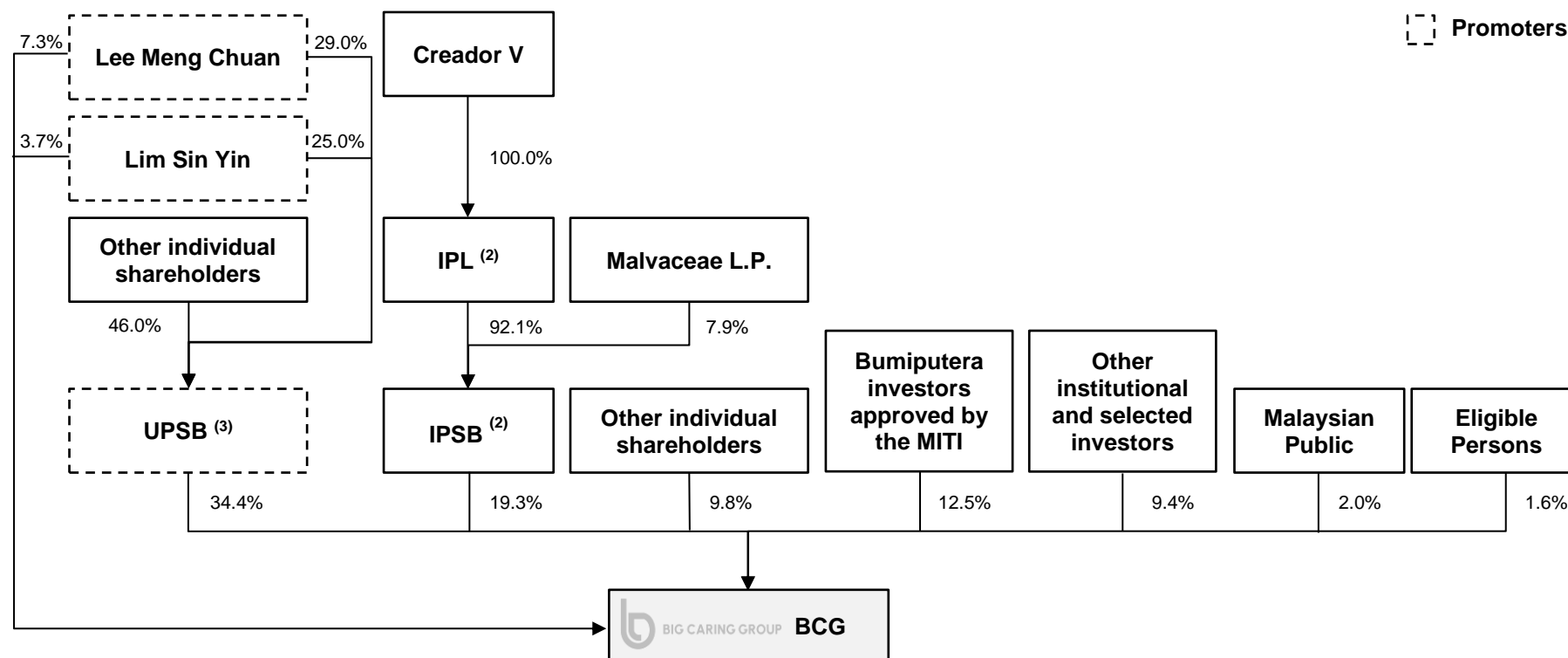


Notes:

- (1) Based on 169,782,217 issued Shares as at the LPD and our enlarged 6,791,288,680 issued Shares after the Subdivision.
- (2) Please refer to Sections 9.1.1(iv) and (v) of this Prospectus for further details on the shareholders of IPSB and IPL.
- (3) Please refer to Section 9.1.1(iii) of this Prospectus for further details on the shareholders of UPSB. The ultimate beneficial owners of UPSB are Lee Meng Chuan and Lim Sin Yin.
- (4) These shareholders mainly comprise the family of Lee Meng Chuan and Lim Sin Yin and employees of our Group. They are Low Youk Chu (1.1%), Lim Bah Kaw (1.1%), Tey Piow Fee (0.9%), Chong Mu Sir (0.9%), Tey Peyau Ek (0.7%), See Chee Choon (0.7%), Lim Shin Jeng (0.7%), Tey Piow Yan (0.5%), Lim Sze Ung (0.5%), Tey Sew (0.5%), Soh Jau Rhen (0.2%), Lee Sheen Mei (0.2%), Shin Kam Mun (0.2%), Lim Shin Yen (0.1%), Loh Yen Yee (0.1%), Wong Wai Hou (negligible) and 380 ESOS Grantees (3.2%). Does not add up to 11.5% due to rounding.
- (5) Does not add up to 100.0% due to rounding.

6. INFORMATION ON OUR GROUP (Cont'd)

After our IPO<sup>(1)</sup>

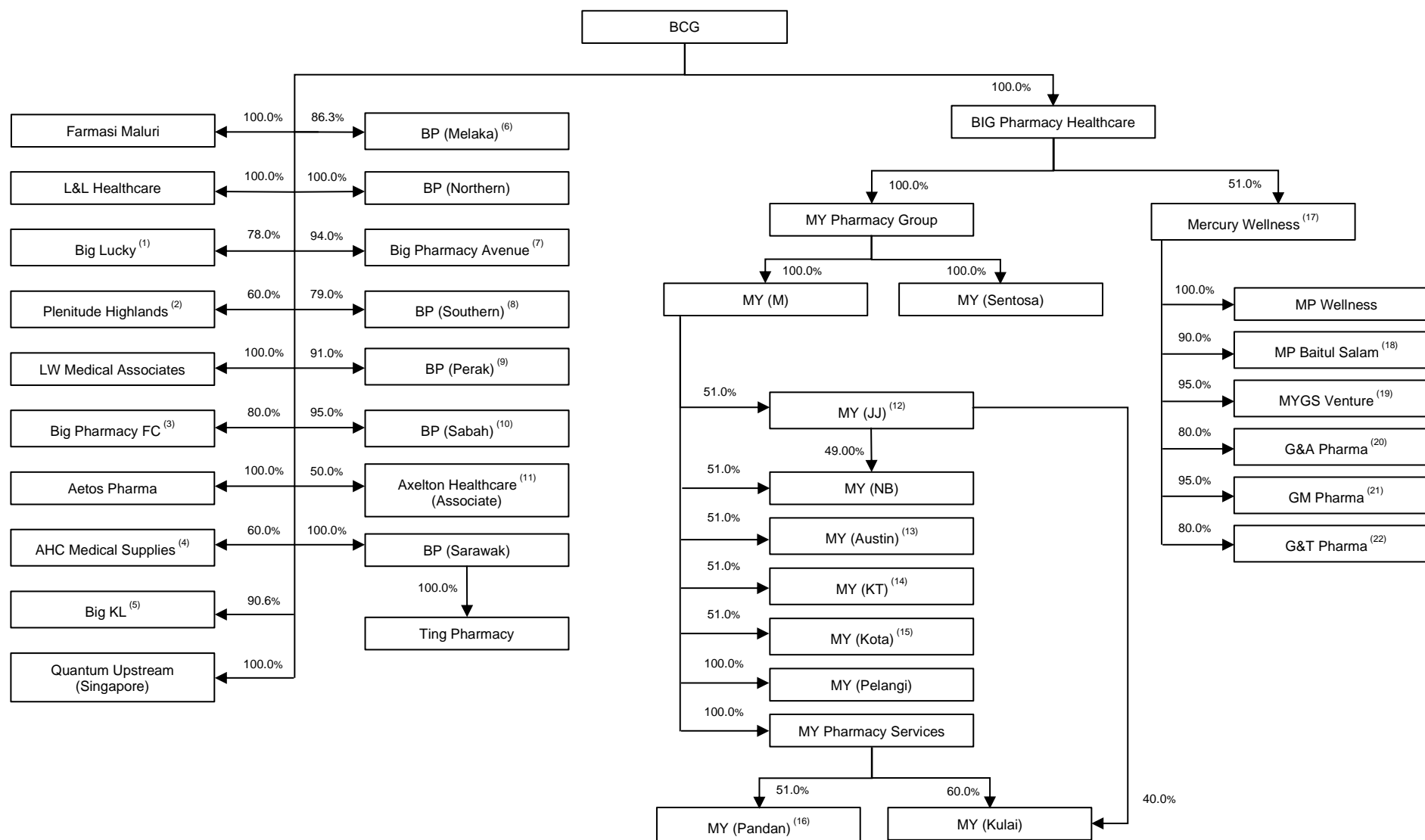


Notes:

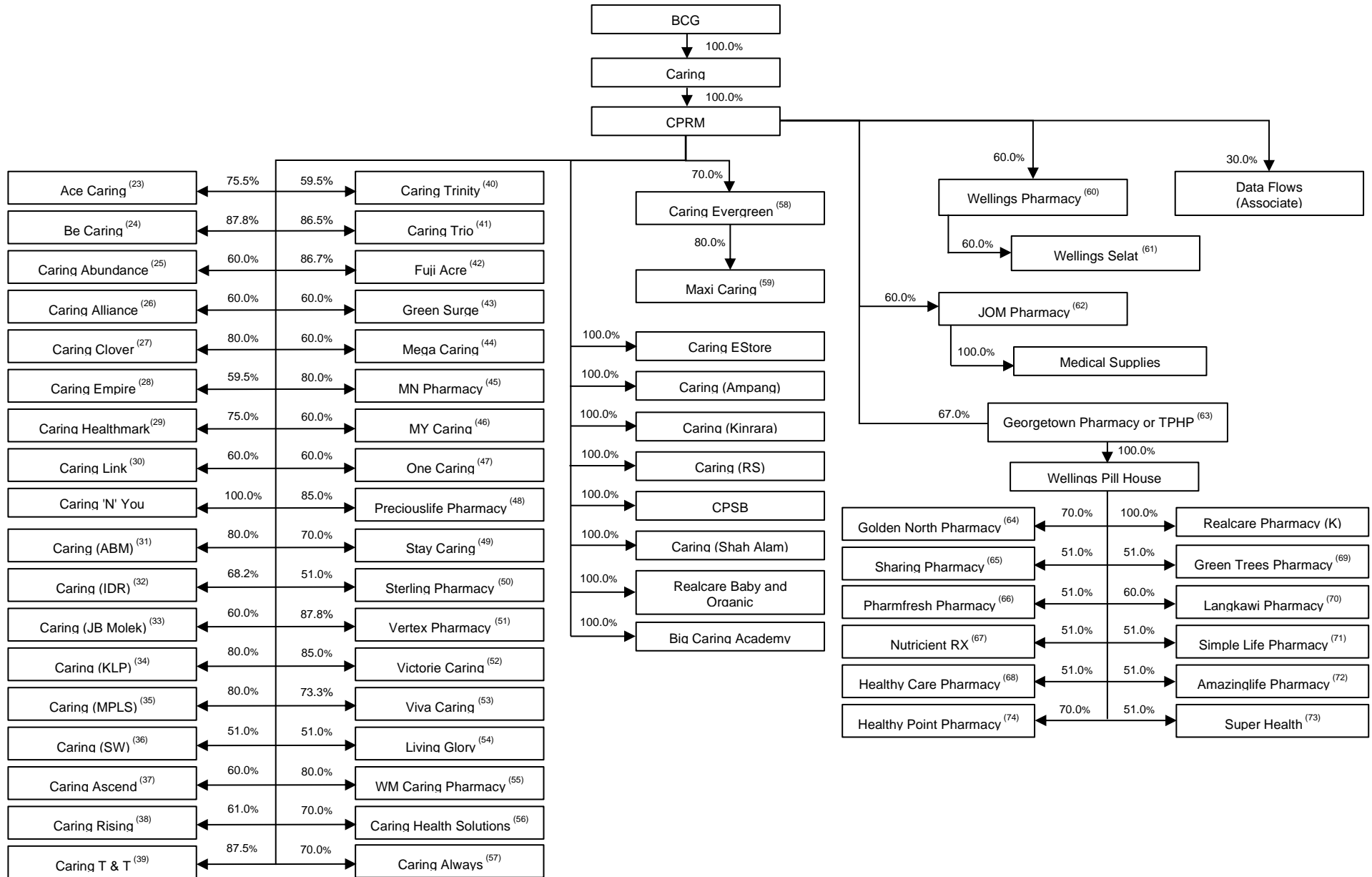
- (1) Based on our enlarged 7,381,835,680 issued Shares after our IPO, and assuming that the Over-allotment Option is not exercised. Assuming the Over-allotment Option is fully exercised, IPSB's shareholding in our Company will reduce by 3.1% from 19.3% to 16.2%, and the shareholdings of the other institutional and selected investors will correspondingly increase by 3.1%.
- (2) Please refer to Sections 9.1.1(iv) and (v) of this Prospectus for further details on the shareholders of IPSB and IPL.
- (3) Please refer to Section 9.1.1(iii) of this Prospectus for further details on the shareholders of UPSB. The ultimate beneficial owners of UPSB are Lee Meng Chuan and Lim Sin Yin.

6. INFORMATION ON OUR GROUP (Cont'd)

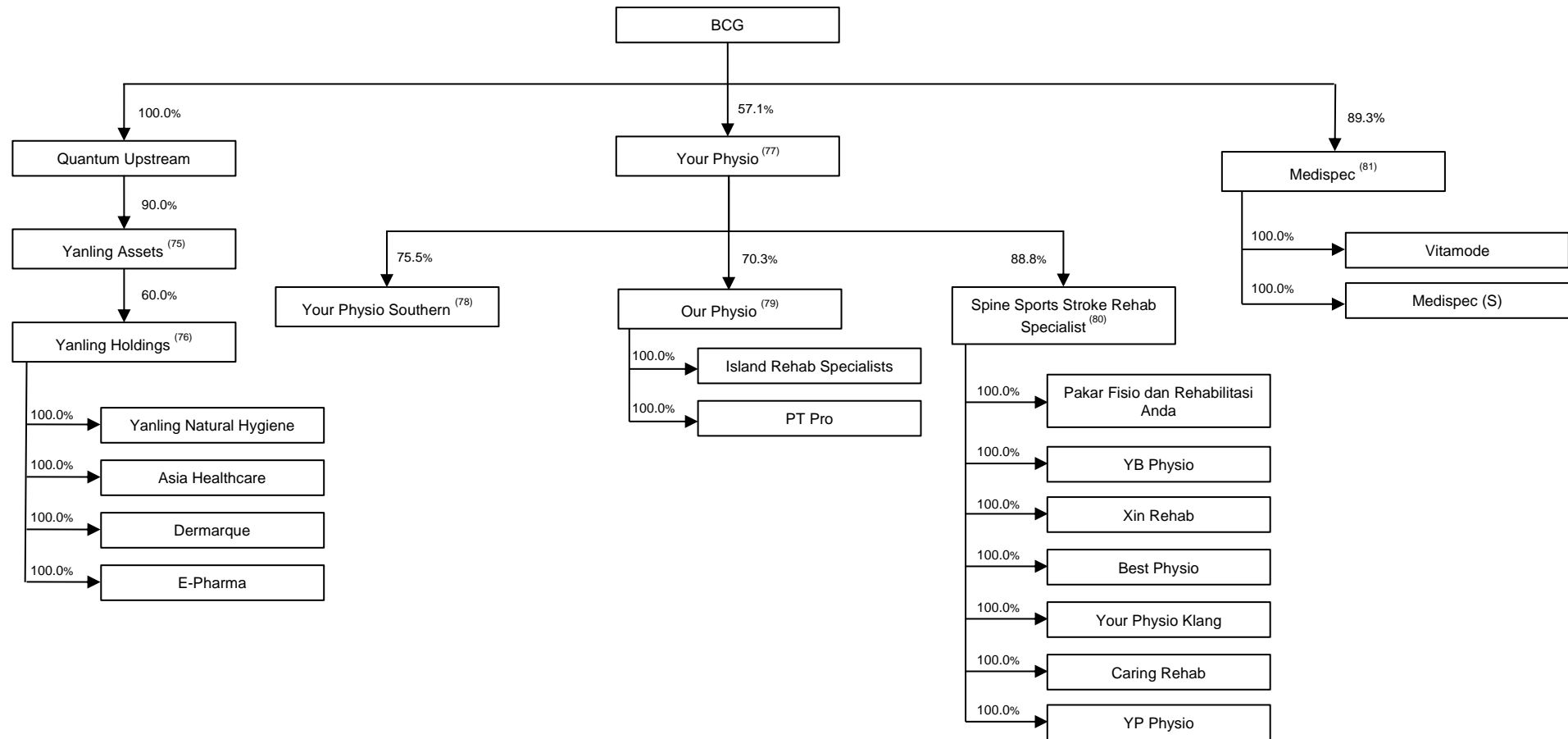
6.2.2 Our Group structure



6. INFORMATION ON OUR GROUP (Cont'd)



6. INFORMATION ON OUR GROUP (Cont'd)



## 6. INFORMATION ON OUR GROUP *(Cont'd)*

Our Group has grown from 39 subsidiaries as at 30 June 2023 to 127 subsidiaries and 2 associates as at the LPD mainly due to the Caring Acquisition, which had over 70 subsidiaries at the point of acquisition. In year 2000, Caring introduced an equity participation business model under which selected registered pharmacists are offered equity participation in its subsidiaries (“**Pharmacist Equity Model**”). This had resulted in multiple subsidiaries being incorporated to facilitate the Pharmacist Equity Model for the opening of new outlets across different locations. Currently, majority of our new retail outlets are opened via existing wholly-owned subsidiaries of our Company and the Pharmacist Equity Model is only adopted by our Group where required. Generally, the minority shareholders of our subsidiaries comprise pharmacists and/or area managers (all of whom are employees of our Group), and founders of the subsidiaries that we acquired. Please refer to Section 7.4.3.1(e) of this Prospectus for further details of the Pharmacist Equity Model.

### Notes:

- (1) The remaining 22.0% equity interest in Big Lucky is held by Wong Wai Hou (20.0%) and Ho Sock Mun (2.0%).
- (2) The remaining 40.0% equity interest in Plenitude Highlands is held by Chen Shen Kit (10.0%), Tan Han Loong (10.0%), Yeoh Sing Yeen (5.0%), Low Wai Kuen (5.0%), Khor E Cheang (5.0%) and Chua Zheng Wei (5.0%).
- (3) The remaining 20.0% equity interest in Big Pharmacy FC is held by Soo Wai Han (10.0%) and Ang Hooi Hoon (10.0%).
- (4) The remaining 40.0% equity interest in AHC Medical Supplies is held by Lee Jyh Xiong (10.0%), Tan Lily (10.0%), Tan Choon Weng (10.0%) and Teoh Chong Beng (10.0%).
- (5) The remaining 9.4% equity interest in Big KL is held by Tan Tze Ting.
- (6) The remaining 13.8% equity interest in BP (Melaka) is held by Heng Siow Chin (2.5%), Lim Wei Fang (2.5%), Tey Shelly (2.5%), Wong Kah Hing (2.5%), Gina Ngooi Shi Min (1.25%), Khan Wen Fang (1.25%) and Koh Yuan Ting (1.25%). Does not add up to 100.0% due to rounding.
- (7) The remaining 6.0% equity interest in Big Pharmacy Avenue is held by Wong Lai Mun (3.0%) and Choe Kin Wei (3.0%).
- (8) The remaining 21.0% equity interest in BP (Southern) is held by See Shao Qin (3.0%), Liang Guo Xiong (3.0%), Dylan Soh Chi Wen (3.0%), Lai Hou Ge (3.0%), Ng Ying Wei (3.0%), Tan Ai Ling (3.0%) and Chau William (3.0%).
- (9) The remaining 9.0% equity interest in BP (Perak) is held by Yeoh Sing Yeen (2.0%), Chua Zheng Wei (2.0%), Khor E Cheang (2.0%), Low Wai Kuen (2.0%) and Manjula A/P Muniandy (1.0%).
- (10) The remaining 5.0% equity interest in BP (Sabah) is held by Lim Yuung Zhu.
- (11) The remaining 50.0% equity interest in Axelton Healthcare is held by Lau Ah Tee.
- (12) The remaining 49.0% equity interest in MY (JJ) is held by Tan Won Chin.

**6. INFORMATION ON OUR GROUP (Cont'd)**

- (13) The remaining 49.0% equity interest in MY (Austin) is held by Yoong Yuen Sian.
- (14) The remaining 49.0% equity interest in MY (KT) is held by Chia Xu Ling.
- (15) The remaining 49.0% equity interest in MY (Kota) is held by Lo Chee Weng.
- (16) The remaining 49.0% equity interest in MY (Pandan) is held by Koh Sok Peng.
- (17) The remaining 49.0% equity interest in Mercury Wellness is held by Mercury Ventures Sdn Bhd.
- (18) The remaining 10.0% equity interest in MP Baitul Salam is held by Mohammad Ghazali Bin Ab Salam.
- (19) The remaining 5.0% equity interest in MYGS Venture is held by Sin Shiou Fu.
- (20) The remaining 20.0% equity interest in G&A Pharma is held by Agnes Chan Jia Ji.
- (21) The remaining 5.0% equity interest in GM Pharma is held by Varatharajan A/L Annamalay.
- (22) The remaining 20.0% equity interest in G&T Pharma is held by Tan Shu Hwa.
- (23) The remaining 24.5% equity interest in Ace Caring is held by Lau Yee Voon (12.25%) and Beh Siew Lian (12.25%).
- (24) The remaining 12.3% equity interest in Be Caring is held by Liew Pooi Cheng. Does not add up to 100.0% due to rounding.
- (25) The remaining 40.0% equity interest in Caring Abundance is held by Ng Cheah Phing (20.0%) and Chia Muan Muan (20.0%).
- (26) The remaining 40.0% equity interest in Caring Alliance is held by Tan Yi Hui (20.0%) and Ler Yong Ta (20.0%).
- (27) The remaining 20.0% equity interest in Caring Clover is held by Ooi Pei Lin (10.0%) and Ooi Jin Yi (10.0%).
- (28) The remaining 40.5% equity interest in Caring Empire is held by Tan Pik Seng (13.5%), Tang Guang Hui (13.5%) and Tan Teck Koon (13.5%).
- (29) The remaining 25.0% equity interest in Caring Healthmark is held by Loo Chuan Yen.
- (30) The remaining 40.0% equity interest in Caring Link is held by Tee Siew What (30.0%) and Yap Sze Yin (10.0%).
- (31) The remaining 20.0% equity interest in Caring (ABM) is held by Voon Hui Shun.
- (32) The remaining 31.8% equity interest in Caring (IDR) is held by Lai Kok Yoong.

**6. INFORMATION ON OUR GROUP (Cont'd)**

- (33) The remaining 40.0% equity interest in Caring (JB Molek) is held by Goo Yuan Tieh (24.0%) and Lee Yoon Leong (16.0%).
- (34) The remaining 20.0% equity interest in Caring (KLP) is held by Ang Hooi Hoon (10.0%) and Soo Wai Han (10.0%).
- (35) The remaining 20.0% equity interest in Caring (MPLS) is held by Siow Cheuk Ching (10.0%) and Elaine Poon Siew Yan (10.0%).
- (36) The remaining 49.0% equity interest in Caring (SW) is held by Tan Fei Wun.
- (37) The remaining 40.0% equity interest in Caring Ascend is held by Foong Jeng Yew (20.0%) and Siew Ben Jern (20.0%).
- (38) The remaining 39.0% equity interest in Caring Rising is held by Heng Xin Ya (13.0%), Lew Ai Peng (13.0%) and Choo Jia Ying (13.0%).
- (39) The remaining 12.5% equity interest in Caring T & T is held by Tan Yee May.
- (40) The remaining 40.5% equity interest in Caring Trinity is held by Tan Thien Thien (13.5%), Sharon Lai Wai Ling (13.5%) and Ong Chin Yee (13.5%).
- (41) The remaining 13.5% equity interest in Caring Trio is held by Ng Yee Choung.
- (42) The remaining 13.3% equity interest in Fuji Acre is held by Derek Moon Weng Chee.
- (43) The remaining 40.0% equity interest in Green Surge is held by Wong Shin Yi (20.0%) and Chua Qi Yun (20.0%).
- (44) The remaining 40.0% equity interest in Mega Caring is held by Chow Ching Yei (20.0%) and Tey Lu Ping (20.0%).
- (45) The remaining 20.0% equity interest in MN Pharmacy is held by Kuan Mun Ni.
- (46) The remaining 40.0% equity interest in MY Caring is held by Chan Chia Huoi (20.0%) and Seow Fue Chin (20.0%).
- (47) The remaining 40.0% equity interest in One Caring is held by Koh Pei Ying (20.0%) and Ooi Thean Thean (20.0%).
- (48) The remaining 15.0% equity interest in Preciouslife Pharmacy is held by Tee Phaik Kien.
- (49) The remaining 30.0% equity interest in Stay Caring is held by Joshua Ng Zheng Yong.
- (50) The remaining 49.0% equity interest in Sterling Pharmacy is held by Goh Seong Por (25.0%) and Ang Swee Lim (24.0%).
- (51) The remaining 12.3% equity interest in Vertex Pharmacy is held by Wong Kait Chon. Does not add up to 100.0% due to rounding.
- (52) The remaining 15.0% equity interest in Victorie Caring is held by Ng Yi Chan.

**6. INFORMATION ON OUR GROUP** *(Cont'd)*

- (53) The remaining 26.6% equity interest in Viva Caring is held by Gwee Xin Yun (13.3%) and Khor Yong Xin (13.3%). Does not add up to 100.0% due to rounding.
- (54) The remaining 49.0% equity interest in Living Glory is held by Eileen Lau Ruey Lee (40.0%) and Kok Kian Wei (9.0%).
- (55) The remaining 20.0% equity interest in WM Caring Pharmacy is held by Lee Sze Wei.
- (56) The remaining 30.0% equity interest in Caring Health Solutions is held by Lim Chee Kiat.
- (57) The remaining 30.0% equity interest in Caring Always is held by Tan Choo Lin.
- (58) The remaining 30.0% equity interest in Caring Evergreen is held by Evergreen (1979) Trading Sdn Bhd.
- (59) The remaining 20.0% equity interest in Maxi Caring is held by Cheong Keng Boon (10.0%) and Voon Ee May (10.0%).
- (60) The remaining 40.0% equity interest in Wellings Pharmacy is held by Mah Choon Leng (29.0%), Wong Mei Fong (5.1%), Tan Zhen Yao (5.1%), Khoo Geok Ping (0.4%) and Tay Chin Ching (0.4%).
- (61) The remaining 40.0% equity interest in Wellings Selat is held by Chan Meng Sheh (20.0%) and Koh Poh Suan (20.0%).
- (62) The remaining 40.0% equity interest in JOM Pharmacy is held by Kok Kian Wei (20.0%) and Kok Kian Min (20.0%).
- (63) The remaining 32.9% equity interest in Georgetown Pharmacy or TPHP is held by Ng Wei Ping (4.6%), Lim Kelvin (3.4%), Tung Kean Seng (3.4%), Tan Zhen Yao (2.9%), Wong Mei Fong (2.9%), Khoo Sze Ling (2.6%), Mah Choon Leng (2.6%), Choong Li Dong (2.6%), Ong Hoay Ling (2.6%), Yeow Shin Yi (1.7%), Lye Chu Siang (1.2%), Liam Kah Thiam (1.0%), Lim Chee Mun (1.0%), Tay Chin Ching (0.2%) and Khoo Geok Ping (0.2%). Does not add up to 100.0% due to rounding.
- (64) The remaining 30.0% equity interest in Golden North Pharmacy is held by Tan Chi Xiang.
- (65) The remaining 49.0% equity interest in Sharing Pharmacy is held by Kang Pei Joul.
- (66) The remaining 49.0% equity interest in Pharmfresh Pharmacy is held by Tan Wei Sheng (34.0%) and Nicholas Lim Xue Eu (15.0%).
- (67) The remaining 49.0% equity interest in Nutricient RX is held by Ong It Seang (37.0%), Cherylene Ann Bruyns (6.0%) and Tan Ann Joe (6.0%).
- (68) The remaining 49.0% equity interest in Healthy Care Pharmacy is held by Lee Yu Ren (32.0%) and Ong Jun Kok (17.0%).
- (69) The remaining 49.0% equity interest in Green Trees Pharmacy is held by Nah Bee Chyi.

**6. INFORMATION ON OUR GROUP (Cont'd)**

- (70) The remaining 40.0% equity interest in Langkawi Pharmacy is held by Tan Chai Choo.
- (71) The remaining 49.0% equity interest in Simple Life Pharmacy is held by Lim Kah Kiat (43.0%) and Lim Zheng Hoong (6.0%).
- (72) The remaining 49.0% equity interest in Amazinglife Pharmacy is held by Lim Kok Kit (37.0%), Kang Zhi Xian (6.0%) and Justine Liau Jing Cheng (6.0%).
- (73) The remaining 49.0% equity interest in Super Health is held by Ooi Yi Zhi.
- (74) The remaining 30.0% equity interest in Healthy Point Pharmacy is held by Tan Hooi Ni.
- (75) The remaining 10.0% equity interest in Yanling Assets is held by Brego Life Sciences Sdn Bhd.
- (76) The remaining 40.0% equity interest in Yanling Holdings is held by Goh Ching Yang (20.0%) and Sin Laik Choo (20.0%).
- (77) The remaining 42.9% equity interest in Your Physio is held by Embrace Success Sdn Bhd (21.0%) and Yttrium (I) Sdn Bhd (21.9%).
- (78) The remaining 24.5% equity interest in Your Physio Southern is held by Lee Choon Yik (20.75%) and Ng Xin Yi (3.75%).
- (79) The remaining 29.7% equity interest in Our Physio is held by Kong Mun Chun (0.45%), Lee Yue Jia (1.13%), Chang Sok Hooi (15.65%), Khong Yen Yun (2.79%), Tan May Jynn (1.13%) and Lee Choon Yik (8.52%).
- (80) The remaining 11.2% equity interest in Spine Sports Stroke Rehab Specialist is held by Edmund Sean Ong (0.27%), Cheah Yong Ying (0.39%), Choo Siew Wen (0.06%), Choo Yun Jian (0.27%), Cornelia Kueh Shu Wen (0.04%), Gan Yee Jie (0.98%), Ho Kui Fei (1.75%), Lim Jo Lyn (0.85%), Ong Ke Yee (0.48%), Tham Hui Lin (0.48%), Tneh Xian Hooi (0.39%), Wilfred Wong Wei Choong (0.17%), Yong Hok Nian (0.25%), Lee Choon Yik (3.68%), Tan Hui Teng (0.39%), Tan Jing Yu (0.39%) and Bong Jing Chi (0.39%).
- (81) The remaining 10.7% equity interest in Medispec is held by Virapatna Thakolsri.

**6. INFORMATION ON OUR GROUP (Cont'd)****6.3 OUR SUBSIDIARIES AND ASSOCIATES**

Our Subsidiaries and Associates as at the LPD are as follows:

<b>Name (Registration number)</b>	<b>Date and country of incorporation</b>	<b>Share capital</b>	<b>Equity interest (%)</b>	<b>Principal activities</b>
<b>Subsidiaries of BCG</b>				
Farmasi Maluri (200201020306 (587969-U))	30 July 2002 Malaysia	RM100,000	100.0	Retail pharmacy, selling medicines and dispenses prescriptions.
L&L Healthcare (200801026014 (827341-X))	30 July 2008 Malaysia	RM600,000	100.0	Retail pharmacy, selling medicines and dispenses prescriptions.
Big Lucky (201501005311 (1130641-V))	6 February 2015 Malaysia	RM2,002,130	78.0	Retail pharmacy, selling medicine, retail business and rice.
Plenitude Highlands (201401027610 (1103696-V))	6 August 2014 Malaysia	RM1,050,000	60.0	Retail pharmacy, selling medicine, retail business and rice.
LW Medical Associates (200801003327 (804611-T))	29 January 2008 Malaysia	RM50,000	100.0	Provision of medical services.
Big Pharmacy FC (201901019163 (1328492-D))	29 May 2019 Malaysia	RM1,200,000	80.0	Pharmacy chain retail and rice.
Aetos Pharma (201901013621 (1322949-D))	18 April 2019 Malaysia	RM1	100.0	Wholesale and distribution of imported and local pharmaceutical, healthcare and cosmetics products.
Quantum Upstream (Singapore) (202111908E)	5 April 2021 Singapore	SGD1	100.0	Dormant. The intended principal activity is wholesale of medicinal and pharmaceutical products (western); and medicinal, professional, scientific and precision equipment.
BIG Pharmacy Healthcare (199801010752 (466880-D))	5 August 1998 Malaysia	RM37,422,400	100.0	Investment holding, pharmacy operator, retail business and rice.
BP (Melaka) (202201025529 (1471226-W))	14 July 2022 Malaysia	RM4,000,001	86.3	Retail pharmacy and rice.
BP (Northern) (202001040617 (1396938-A))	9 December 2020 Malaysia	RM10,000	100.0	Retail pharmacy and rice.

**6. INFORMATION ON OUR GROUP (Cont'd)**

<b>Name (Registration number)</b>	<b>Date and country of incorporation</b>	<b>Share capital</b>	<b>Equity interest (%)</b>	<b>Principal activities</b>
Big Pharmacy Avenue <sup>(1)</sup> (202101037730 (1438030-H))	11 November 2021 Malaysia	RM7,000,000	94.0	Retail pharmacy and rice.
BP (Southern) (202101040989 (1441289-V))	2 December 2021 Malaysia	RM2,000,000	79.0	To deal in pharmaceutical products and rice.
BP (Perak) <sup>(1)</sup> (202101040987 (1441287-K))	2 December 2021 Malaysia	RM10,000,000	91.0	Retail pharmacy and rice.
BP (Sabah) (202101040983 (1441283-H))	2 December 2021 Malaysia	RM10,000,000	95.0	Retail pharmacy and rice.
Big KL <sup>(1)</sup> (202101040991 (1441291-U))	2 December 2021 Malaysia	RM1,600,000	90.6	Retail pharmacy, rice rehabilitation products and tools.
AHC Medical Supplies (200501035219 (717364-D))	6 December 2005 Malaysia	RM2,130,000	60.0	Trading of medical and hospital equipments, pharmaceutical products and services, general trading, investment in shares.
BP (Sarawak) (202001023800 (1380120-W))	14 August 2020 Malaysia	RM250,000	100.0	Retail pharmacy and rice.
Quantum Upstream (201401011997 (1088074-H))	8 April 2014 Malaysia	RM3,000	100.0	Distribute all kind of medication, pharmaceuticals, healthcare and cosmetic products.
Caring (201201027369 (1011859-D))	30 July 2012 Malaysia	RM225,108,31 6	100.0	Investment holding.
Medispec (198501004716 (137156-U))	21 March 1985 Malaysia	RM1,000,000	89.3	Wholesale of pharmaceutical and medical goods.
Your Physio (201501010657 (1135992-H))	18 March 2015 Malaysia	RM23,388,998	57.1	Provision of physiotherapy services and rehabilitation centre.

**6. INFORMATION ON OUR GROUP (Cont'd)**

<b>Name (Registration number)</b>	<b>Date and country of incorporation</b>	<b>Share capital</b>	<b>Equity interest (%)</b>	<b>Principal activities</b>
<b>Subsidiaries of BIG Pharmacy Healthcare</b>				
My Pharmacy Group (201401018481 (1094568-H))	22 May 2014 Malaysia	RM24,045,645	100.0	To deal in pharmaceutical products and rice.
Mercury Wellness (202101002942 (1403240-V))	25 January 2021 Malaysia	RM12,021,600	51.0	Investment holding, wholesaling and retailing of pharmaceutical product, retail sale of rice.
<b>Subsidiaries of MY Pharmacy Group</b>				
MY (Sentosa) (199101008109 (218421-D))	10 June 1991 Malaysia	RM80,000	100.0	To deal in pharmaceutical products and rice.
MY (M) (199601026899 (399251-M))	22 August 1996 Malaysia	RM500,000	100.0	Investment holding.
<b>Subsidiaries of MY (M)</b>				
MY Pharmacy (JJ) Sdn Bhd (201301017226 (1047059-K))	22 May 2013 Malaysia	RM300,000	51.0	To deal in pharmaceutical products and rice.
MY (NB) (201101010390 (938529-P))	31 March 2011 Malaysia	RM200,000	76.0	To deal in pharmaceutical products and rice.
MY (Austin) (201001009811 (894441-T))	22 March 2010 Malaysia	RM100,000	51.0	To deal in pharmaceutical products and rice.
MY (KT) (201101010392 (938531-A))	31 March 2011 Malaysia	RM200,000	51.0	To deal in pharmaceutical products and rice.
MY (Pelangi) (199901004661 (479561-K))	23 March 1999 Malaysia	RM50,002	100.0	To deal in pharmaceutical products and rice.
MY (Kota) (201301002743 (1032581-V))	23 January 2013 Malaysia	RM200,000	51.0	To deal in pharmaceutical products and rice.
MY Pharmacy Services (200101018408 (554165-D))	24 July 2001 Malaysia	RM418,000	100.0	Investment holding.

**6. INFORMATION ON OUR GROUP (Cont'd)**

<b>Name (Registration number)</b>	<b>Date and country of incorporation</b>	<b>Share capital</b>	<b>Equity interest (%)</b>	<b>Principal activities</b>
<b>Subsidiaries of MY Pharmacy Services</b>				
MY (Kulai) (200301023957 (626377-W))	27 August 2003 Malaysia	RM100,000	80.4	To deal in pharmaceutical products and rice.
MY (Pandan) (200101009289 (545045-D))	16 April 2001 Malaysia	RM61,000	51.0	To deal in pharmaceutical products and rice.
<b>Subsidiaries of Mercury Wellness</b>				
MP Wellness (202001029352 (1385672-X))	22 September 2020 Malaysia	RM200,000	51.0	To carry on the business of general importers and exporters, general merchant, hire purchase dealers, commission agents, manufacturers agents and representatives, manufacturers, processors, retailers, and wholesaler of and dealers including but not limited to pharmaceutical and any health-related products, food and beverages, commodities, articles, products and merchandise of all kinds in a manufactured, semi-manufactured or raw state and to buy and sell, barter, exchange or otherwise deal in the same.
MP Baitul Salam (201901035379 (1344709-A))	2 October 2019 Malaysia	RM200,000	45.9	Stores specialised in retail sale of pharmaceuticals, medical and orthopedic goods, buying, selling, renting and operating of self-owned or leased real estate – land and retail sale of rice.
MYGS Venture (201401038858 (1115006-U))	27 October 2014 Malaysia	RM400,000	48.5	Retailing of pharmaceutical products; retail sale of rice.

**6. INFORMATION ON OUR GROUP (Cont'd)**

<b>Name (Registration number)</b>	<b>Date and country of incorporation</b>	<b>Share capital</b>	<b>Equity interest (%)</b>	<b>Principal activities</b>
G&A Pharma (201901041597 (1350927-V))	18 November 2019 Malaysia	RM200,000	40.8	To carry on the business of general importers and exporters, general merchant, hire purchase dealers, commission agents, manufacturers agents and representatives, manufacturers, processors, retailers, and wholesaler of and dealers including but not limited to pharmaceutical and any health-related products, food and beverages, commodities, articles, products and merchandise of all kinds in a manufactured, semi-manufactured or raw state and to buy and sell, barter, exchange or otherwise deal in the same, retail of rice.
GM Pharma (202001029817 (1386137-M))	24 September 2020 Malaysia	RM800,000	48.5	To carry on the business of general importers and exporters, general merchant, hire purchase dealers, commission agents, manufacturers agents and representatives, manufacturers, processors, retailers and wholesaler of and dealers including but not limited to pharmaceutical and any health related products, food and beverages, commodities, articles, products and merchandise of all kinds in a manufactured, semi-manufactured or raw state and to buy and sell, barter, exchange or otherwise deal in the same.
G&T Pharma (201801027858 (1289884-U))	2 August 2018 Malaysia	RM200,000	40.8	Wholesale of pharmaceutical and medical goods and buying, selling, renting and operating of self-owned or leased real estate – land and retail sale of rice.

**6. INFORMATION ON OUR GROUP (Cont'd)**

<b>Name (Registration number)</b>	<b>Date and country of incorporation</b>	<b>Share capital</b>	<b>Equity interest (%)</b>	<b>Principal activities</b>
<b>Subsidiary of BP (Sarawak)</b>				
Ting Pharmacy (202301002222 (1496141-T))	18 January 2023 Malaysia	RM9,348,922	100.0	Retail pharmacy and rice.
<b>Subsidiary of Quantum Upstream</b>				
Yanling Assets (202301031124 (1525047-D))	10 August 2023 Malaysia	RM57,201,000	90.0	Investment holding and provision of management services.
<b>Subsidiary of Yanling Assets</b>				
Yanling Holdings <sup>(2)</sup> (202301026393 (1520316-V))	11 July 2023 Malaysia	RM100	54.0	Investment holding activities.
<b>Subsidiaries of Yanling Holdings</b>				
Yanling Natural Hygiene (199401036127 (321810-D))	29 October 1994 Malaysia	RM500,000	54.0	Engaged in the business of manufacturing health products, provide laboratory test, product registration and research and development.
Asia Healthcare (200801012578 (813866-D))	16 April 2008 Malaysia	RM500,000	54.0	Engaged in business of trading of health and skincare products.
Dermarque (200901015186 (858257-A))	25 May 2009 Malaysia	RM250,000	54.0	Engaged in the business of manufacturing of skincare products.
E-Pharma (200101021959 (557717-M))	30 August 2001 Malaysia	RM2	54.0	Manufacturing health product.
<b>Subsidiary of Caring</b>				
CPRM (200601037651 (757411-U))	26 December 2006 Malaysia	RM46,000,000	100.0	Investment holding, the provision of management services as well as warehousing and distribution of pharmaceutical, healthcare and personal care products, along with various foodstuffs including, but not limited to, rice and grains products.

**6. INFORMATION ON OUR GROUP (Cont'd)**

<b>Name (Registration number)</b>	<b>Date and country of incorporation</b>	<b>Share capital</b>	<b>Equity interest (%)</b>	<b>Principal activities</b>
<b>Subsidiaries of CPRM</b>				
Ace Caring (200701025329 (783350-D))	3 August 2007 Malaysia	RM100,000	75.5	Operation of community pharmacy including retailing of pharmaceutical, healthcare and personal care products.
Be Caring (200301008159 (610579-X))	31 March 2003 Malaysia	RM100,000	87.8	Operation of community pharmacy including retailing of pharmaceutical, healthcare and personal care products.
Caring Abundance (201201038586 (1023064-T))	1 November 2012 Malaysia	RM100,000	60.0	Operating a pharmacy including retailing of pharmaceutical, healthcare and personal care products.
Caring Alliance (202001005034 (1361354-T))	13 February 2020 Malaysia	RM100,000	60.0	Operation of community pharmacy including retailing of pharmaceutical, healthcare and personal care products, all kinds of foodstuff including but not limited to rice and grains products.
Caring Clover (201301044459 (1074282-D))	16 December 2013 Malaysia	RM100,000	80.0	Operation of community pharmacy including retailing of pharmaceutical, healthcare and personal care products.
Caring Empire (201101039892 (968014-D))	11 November 2011 Malaysia	RM310,000	59.5	Operation of community pharmacy including retailing of pharmaceutical, healthcare and personal care products.
Caring Healthmark (201701032660 (1246830-D))	15 September 2017 Malaysia	RM100,000	75.0	Operation of community pharmacy including retailing of pharmaceutical, healthcare and personal care products, all kind of foodstuff including but not limited to rice and grains products.
Caring Link (201901012444 (1321772-P))	11 April 2019 Malaysia	RM100,000	60.0	Operation of community pharmacy including retailing of pharmaceutical, healthcare and personal care products, all kind of foodstuff including but not limited to rice and grains products.

**6. INFORMATION ON OUR GROUP (Cont'd)**

<b>Name (Registration number)</b>	<b>Date and country of incorporation</b>	<b>Share capital</b>	<b>Equity interest (%)</b>	<b>Principal activities</b>
Caring 'N' You (200701027838 (785860-D))	23 August 2007 Malaysia	RM100,000	100.0	Operation of community pharmacy including retailing of pharmaceutical, healthcare and personal care products.
Caring (ABM) (200901030090 (873196-M))	25 September 2009 Malaysia	RM1,300,000	80.0	Operation of community pharmacy including retailing of pharmaceutical, healthcare and personal care products.
Caring (Ampang) (200801023943 (825266-W))	14 July 2008 Malaysia	RM100,000	100.0	Operation of community pharmacy including retailing of pharmaceutical, healthcare and personal care products.
Caring (IDR) (201101032999 (961134-H))	22 September 2011 Malaysia	RM100,000	68.2	Operation of community pharmacy including retailing of pharmaceutical, healthcare and personal care products.
Caring (JB Molek) (201101024843 (952979-M))	15 July 2011 Malaysia	RM100,000	60.0	Operation of community pharmacy including retailing of pharmaceutical, healthcare and personal care products, along with various foodstuffs including, but not limited to, rice and grains products.
Caring (KLP) (200701018537 (776548-H))	11 June 2007 Malaysia	RM100,000	80.0	Operation of community pharmacy including retailing of pharmaceutical, healthcare and personal care products.
Caring (MPLS) (200901030426 (873532-U))	30 September 2009 Malaysia	RM100,000	80.0	Operation of community pharmacy including retailing of pharmaceutical, healthcare and personal care products.
Caring (SW) (200901004511 (847445-W))	20 February 2009 Malaysia	RM300,000	51.0	Operation of community pharmacy including retailing of pharmaceutical, healthcare and personal care products.
Caring Ascend (201801019273 (1281289-H))	24 May 2018 Malaysia	RM100,000	60.0	Operation of community pharmacy including retailing of pharmaceutical, healthcare and personal care products.

**6. INFORMATION ON OUR GROUP (Cont'd)**

<b>Name (Registration number)</b>	<b>Date and country of incorporation</b>	<b>Share capital</b>	<b>Equity interest (%)</b>	<b>Principal activities</b>
Caring Rising (201301014773 (1044606-P))	2 May 2013 Malaysia	RM1,000,000	61.0	Operation of community pharmacy including retailing of pharmaceutical, healthcare and personal care products.
Caring T & T (201901006596 (1315923-A))	27 February 2019 Malaysia	RM100,000	87.5	Operation of community pharmacy including retailing of pharmaceutical, healthcare and personal care product, all kinds of foodstuff including but not limited to rice and grains products.
Caring Trinity (201301014771 (1044604-D))	2 May 2013 Malaysia	RM100,000	59.5	Operation of community pharmacy including retailing of pharmaceutical, healthcare and personal care product, all kinds of foodstuff including but not limited to rice and grains products.
Caring Trio (201201018694 (1004207-T))	31 May 2012 Malaysia	RM100,000	86.5	Operation of community pharmacy including retailing of pharmaceutical, healthcare and personal care products.
Fuji Acre (201301006992 (1036832-M))	4 March 2013 Malaysia	RM400,000	86.7	Operation of community pharmacy including retailing of pharmaceutical, healthcare and personal care products.
Green Surge (201001023428 (907199-H))	8 July 2010 Malaysia	RM310,000	60.0	Operation of community pharmacy including retailing of pharmaceutical, healthcare and personal care products.
Mega Caring (201201035364 (1019846-V))	5 October 2012 Malaysia	RM100,000	60.0	Operation of community pharmacy including retailing of pharmaceutical, healthcare and personal care products.
MN Pharmacy (200401011769 (650272-T))	23 April 2004 Malaysia	RM100,000	80.0	Operation of community pharmacy including retailing of pharmaceutical, healthcare and personal care products.

**6. INFORMATION ON OUR GROUP (Cont'd)**

<b>Name (Registration number)</b>	<b>Date and country of incorporation</b>	<b>Share capital</b>	<b>Equity interest (%)</b>	<b>Principal activities</b>
MY Caring (200901011211 (854236-U))	21 April 2009 Malaysia	RM100,000	60.0	Operation of community pharmacy including retailing of pharmaceutical, healthcare and personal care products, all kinds of foodstuff including but not limited to rice and grains products.
One Caring (201001004231 (888822-W))	3 February 2010 Malaysia	RM100,000	60.0	Operation of community pharmacy including retailing of pharmaceutical, healthcare and personal care products, all kinds of foodstuff including but not limited to rice and grains products.
Preciouslife Pharmacy (200801018342 (819638-M))	30 May 2008 Malaysia	RM100,000	85.0	Operation of community pharmacy including retailing of pharmaceutical, healthcare and personal care products, all kinds of foodstuff including but not limited to rice and grains products.
Stay Caring (200401023069 (661575-M))	3 August 2004 Malaysia	RM100,000	70.0	Operation of community pharmacy including retailing of pharmaceutical, healthcare and personal care products.
Sterling Pharmacy (200201008127 (575790-U))	2 April 2002 Malaysia	RM100,000	51.0	Operation of community pharmacy including retailing of pharmaceutical, healthcare and personal care products.
Vertex Pharmacy (200801022910 (824229-W))	7 July 2008 Malaysia	RM100,000.00	87.8	Community pharmacy including retailing pharmaceutical, healthcare and personal care products.
Victorie Caring (200901039668 (882809-W))	16 December 2009 Malaysia	RM200,000	85.0	Operation of community pharmacy including retailing of pharmaceutical, healthcare and personal care products, all kinds of foodstuff including but not limited to rice and grains products.

**6. INFORMATION ON OUR GROUP (Cont'd)**

<b>Name (Registration number)</b>	<b>Date and country of incorporation</b>	<b>Share capital</b>	<b>Equity interest (%)</b>	<b>Principal activities</b>
Viva Caring (200001009934 (512540-T))	25 April 2000 Malaysia	RM100,000	73.3	Operation of community pharmacy including retailing of pharmaceutical, healthcare and personal care products.
Living Glory (201101035077 (963210-H))	7 October 2011 Malaysia	RM1,000,000	51.0	Operation of community pharmacy including retailing of pharmaceutical, healthcare and personal care products, all kinds of foodstuff including but not limited to rice and grains products.
WM Caring Pharmacy (200901003244 (846171-V))	10 February 2009 Malaysia	RM300,000	80.0	Operation of community pharmacy including retailing of pharmaceutical, healthcare and personal care products.
Caring Health Solutions (200701000695 (758693-P))	10 January 2007 Malaysia	RM500,000	70.0	Operation of community pharmacy including retailing of pharmaceutical, healthcare and personal care products.
Caring Evergreen (201801011546 (1273562-P))	26 March 2018 Malaysia	RM6,980,000	70.0	Operation of community pharmacy including retailing of pharmaceutical, healthcare and personal care products.
JOM Pharmacy (200901020212 (863309-V))	6 July 2009 Malaysia	RM8,500,000	60.0	Pharmacy.
Caring Estore (200901038640 (881773-W))	8 December 2009 Malaysia	RM2	100.0	Internet sales and warehouse sales of healthcare and personal care products.
Caring Always (201001013523 (897754-A))	8 April 2010 Malaysia	RM100,000	70.0	Operation of community pharmacy including retailing of pharmaceutical, healthcare and personal care products.
Caring (Kinrara) (200001013092 (515698-K))	1 June 2000 Malaysia	RM100,000	100.0	Investment holding and property investment.

**6. INFORMATION ON OUR GROUP (Cont'd)**

<b>Name (Registration number)</b>	<b>Date and country of incorporation</b>	<b>Share capital</b>	<b>Equity interest (%)</b>	<b>Principal activities</b>
Caring (RS) (201001011988 (896651-V))	31 March 2010 Malaysia	RM100,000	100.0	Operation of community pharmacy including retailing of pharmaceutical, healthcare and personal care products.
CPSB (199401011222 (296901-H))	21 April 1994 Malaysia	RM2,500,000	100.0	Operation of community pharmacy including retailing of pharmaceutical, healthcare and personal care products, all kinds of foodstuff including but not limited to rice and grains products.
Big Caring Academy (200701021474 (779489-D))	4 July 2007 Malaysia	RM100,000	100.0	To provide training and consultancy services for any business interests and other related activities.
Caring (Shah Alam) (201101024841 (952977-A))	15 July 2011 Malaysia	RM100,000	100.0	Operation of community pharmacy including retailing of pharmaceutical, healthcare and personal care products.
Realcare Baby and Organic (201601015781 (1186712-D))	9 May 2016 Malaysia	RM150,000	100.0	Trading in all kind of baby products and rice.
TPHP <sup>(3)</sup> (200901028650 (871754-P))	10 September 2009 Malaysia	RM7,423,216	67.0	Investment holding company.
Wellings Pharmacy <sup>(3)</sup> (200701025380 (783401-A))	3 August 2007 Malaysia	RM1,000,000	60.0	Dealer of pharmaceutical products.
<b>Subsidiary of Caring Evergreen</b>				
Maxi Caring (201201008959 (982479-P))	15 March 2012 Malaysia	RM3,600,000	56.0	Operation of community pharmacy including retailing of pharmaceutical, healthcare and personal care products.
<b>Subsidiary of JOM Pharmacy</b>				
Medical Supplies (Sarawak) (198901009283 (186584-V))	12 September 1989 Malaysia	RM400,000	60.0	Marketing and distribution of pharmaceuticals and healthcare products.

**6. INFORMATION ON OUR GROUP (Cont'd)**

<b>Name (Registration number)</b>	<b>Date and country of incorporation</b>	<b>Share capital</b>	<b>Equity interest (%)</b>	<b>Principal activities</b>
<b>Subsidiaries of TPHP</b>				
Wellings Pill House (201001014063 (898297-K))	14 April 2010 Malaysia	RM1,287,086	67.0	1. Investment holding company. 2. Trading in pharmaceutical products and providing warehouse services to related company.
<b>Subsidiaries of Wellings Pill House</b>				
Realcare Pharmacy (K) (201101039336 (967458-V))	11 November 2011 Malaysia	RM700,000	67.0	Operating a pharmacy, to provide warehouse supplies, warehouse management services and transportation of goods between original and destination to its related companies.
Golden North Pharmacy (202301014394 (1508316-P))	13 April 2023 Malaysia	RM500,000	46.9	Export and import of biotech pharmaceuticals.
Langkawi Pharmacy (201901012034 (1321362-U))	9 April 2019 Malaysia	RM250,000	40.2	Sales of pharmaceutical products.
Green Trees Pharmacy (201401047811 (1124000-U))	22 December 2014 Malaysia	RM150,000	34.2	Sales of pharmaceutical products.
Sharing Pharmacy (201901009424 (1318752-K))	20 March 2019 Malaysia	RM300,000	34.2	Sales of pharmaceutical products.
Simple Life Pharmacy (201901009923 (1319251-T))	22 March 2019 Malaysia	RM600,000	34.2	Sales of pharmaceutical products.
Pharmfresh Pharmacy (201901038074 1347404-M))	21 October 2019 Malaysia	RM400,000	34.2	Sales of pharmaceutical products.
Amazinglife Pharmacy (201901038068 (1347398-P))	21 October 2019 Malaysia	RM400,000	34.2	Sales of pharmaceutical products.

**6. INFORMATION ON OUR GROUP (Cont'd)**

<b>Name (Registration number)</b>	<b>Date and country of incorporation</b>	<b>Share capital</b>	<b>Equity interest (%)</b>	<b>Principal activities</b>
Nutricient RX (202001005288 (1361608-P))	14 February 2020 Malaysia	RM300,000	34.2	Stores specialised in retail sale of pharmaceuticals, medical and orthopaedic goods.
Super Health (202101000809 (1401107-H))	7 January 2021 Malaysia	RM300,000	34.2	Stores specialised in retail sale of pharmaceuticals, medical and orthopaedic goods.
Healthy Care Pharmacy (202101019025 (1419325-V))	21 May 2021 Malaysia	RM100,000	34.2	Stores specialised in retail sale of pharmaceuticals, medical and orthopaedic goods.
Healthy Point Pharmacy (202301033222 (1527145-T))	24 August 2023 Malaysia	RM100,000	46.9	Stores specialised in retail sale of pharmaceuticals, medical and orthopaedic goods; export and import of biotech pharmaceuticals.
<b>Subsidiary of Wellings Pharmacy</b>				
Wellings Selat (202301014581 (1508503-W))	14 April 2023 Malaysia	RM100,000	36.0	Stores specialised in retail sale of pharmaceuticals, medical and orthopaedic goods.
<b>Subsidiaries of Medispec</b>				
Vitamode (200101016010 (551767-A))	29 June 2001 Malaysia	RM2	89.3	Wholesale of pharmaceutical and medical goods.
Medispec (S) (201922419N)	11 July 2019 Singapore	SGD100,000	89.3	Dormant. The intended principal activity is wholesale of medicinal and pharmaceutical products and health supplements.
<b>Subsidiaries of Your Physio</b>				
Your Physio Southern (202201015930 (1461627-P))	5 May 2022 Malaysia	RM351,000	43.1	Physiotherapy and occupational therapy service.
Our Physio (201701035792 (1249963-X))	5 October 2017 Malaysia	RM747,454	40.1	Physiotherapy and occupational therapy service.
Spine Sports Stroke Rehab Specialist (201801042710 (1304742-V))	22 November 2018 Malaysia	RM21,853,348	50.7	Physiotherapy and occupational therapy service.

**6. INFORMATION ON OUR GROUP (Cont'd)**

<b>Name (Registration number)</b>	<b>Date and country of incorporation</b>	<b>Share capital</b>	<b>Equity interest (%)</b>	<b>Principal activities</b>
<b>Subsidiaries of Our Physio</b>				
Island Rehab Specialists (202301043638 (1537554-D))	3 November 2023 Malaysia	RM1,000	40.1	Physiotherapy and occupational therapy service.
PT Pro (202101037432 (1437732-A))	10 November 2021 Malaysia	RM1,000	40.1	Physiotherapy and occupational therapy service.
<b>Subsidiaries of Spine Sports Stroke Rehab Specialist</b>				
Pakar Fisisio dan Rehabilitasi Anda (202101025773 (1426073-T))	3 August 2021 Malaysia	RM1,000	50.7	Physiotherapy and occupational therapy service.
YB Physio (201901036058 (1345388-A))	7 October 2019 Malaysia	RM100	50.7	Physiotherapy and occupational therapy service.
Xin Rehab Specialist (202301043886 (1537802-P))	6 November 2023 Malaysia	RM1,000	50.7	Physiotherapy and occupational therapy service.
Best Physio (202101034126 (1434426-A))	15 October 2021 Malaysia	RM1,000	50.7	1. To provide physiotherapy treatment, hydrotherapy treatment, sport massage therapy and any other therapy treatments to all ages who have medical problems or other health related conditions, illness or injuries that limit their abilities to move and perform functional activities as well as they would like in their daily lives; and 2. To carry on the business for supplying physiotherapy equipment, supplements and instruments of every description.
Your Physio Klang (202301014708 (1508630-T))	17 April 2023 Malaysia	RM1,000	50.7	Physiotherapy and occupational therapy service.
Caring Rehab Specialist (202301043875 (1537791-W))	6 November 2023 Malaysia	RM1,000	50.7	Physiotherapy and occupational therapy service.

**6. INFORMATION ON OUR GROUP (Cont'd)**

<b>Name (Registration number)</b>	<b>Date and country of incorporation</b>	<b>Share capital</b>	<b>Equity interest (%)</b>	<b>Principal activities</b>
YP Physio (202001035186 (1391507-K))	2 November 2020 Malaysia	RM1,000	50.7	Physiotherapy and occupational therapy service.
<b>Associate of BCG</b>				
Axelton Healthcare (202301014110 (1508032-X))	12 April 2023 Malaysia	RM60,002	50.0	Import, sale and distribution of pharmaceutical, medical, cosmetic and related items.
<b>Associate of CPRM</b>				
Data Flows	19 February 2020 Malaysia	RM6,000,100	30.1	Provision of software, platforms development and technology consultancy.

**Notes:**

- (1) We may require the remaining minority shareholders of Big Pharmacy Avenue, BP (Perak) and Big KL (collectively the "**Minority Shareholders**"), to sell all of the Minority Shareholders' shares in Big Pharmacy Avenue (6.0%), BP (Perak) (9.0%) and Big KL (9.4%) to our Company pursuant to a call option ("**BCG Call Option**"). The option price under the BCG Call Option shall be determined based on the higher of: (i) the applicable price-to-earnings ratio of Big Pharmacy Avenue, BP (Perak) and Big KL, ranging from 1.0 to 5.0 times, depending on the number of years the Minority Shareholders have remained as shareholders from the date of the relevant agreement; or (ii) the value of the net tangible assets of Big Pharmacy Avenue, BP (Perak) and Big KL, as reflected in the latest audited accounts of the respective companies. As at the LPD, we have not exercised the BCG Call Option, and the BCG Call Option is exercisable subsequent to our Listing.
- (2) Yanling Assets, our subsidiary, has granted the remaining shareholders of Yanling Holdings (collectively the "**Yanling Shareholders**") the option to sell all of their shares in Yanling Holdings (40.0%) to Yanling Assets pursuant to a put option ("**Yanling Put Option**"). The option price under the Yanling Put Option will be based on the stakes percentage (40.0%) multiplied by 15.0 times of the PATAMI, excluding one-off, non-recurring, non-operating, extraordinary items (including but not limited to intercompany profits and any adjustments arising from the adoption of latest accounting standards) of the latest consolidated audited accounts of Yanling Holdings available during the exercise period. As at the LPD, the Yanling Put Option has not been exercised by the Yanling Shareholders, and the Yanling Put Option is exercisable between November 2026 and January 2027.
- (3) CPRM, our subsidiary, has granted the remaining shareholders of TPHP and Wellings Pharmacy (collectively the "**TPHP and Wellings Shareholders**") the option to sell their shares in TPHP (26.8%) and Wellings Pharmacy (32.4%) to CPRM ("**Caring Put Option**"). As at the LPD, the Caring Put Option has been exercised by the TPHP and Wellings Shareholders for a total consideration of approximately RM37.4 million and RM40.3 million respectively, to which the transfer of shares from the TPHP and Wellings Shareholders to CPRM remains ongoing. Upon the completion of the share transfer, CPRM will hold 93.8% and 92.4% of the equity interest in TPHP and Wellings Pharmacy respectively.

**6. INFORMATION ON OUR GROUP (Cont'd)**

Further details of our Material Subsidiaries as at the LPD are as follows:

**1. AHC Medical Supplies**

AHC Medical Supplies was incorporated in Malaysia under the Companies Act 1965 on 6 December 2005 as a private limited company under its present name and is deemed registered under the Act.

The principal place of business of AHC Medical Supplies is at No. 22A & 22, Lengkok IKS Simpang Empat 1, Taman IKS Simpang Empat, 14100 Simpang Empat, Pulau Pinang.

The issued share capital of AHC Medical Supplies is RM2,130,000 comprising 2,130,000 ordinary shares. There has been no change in the issued share capital of AHC Medical Supplies during the Financial Years Under Review and from 1 July 2025 up to the LPD.

As at the LPD, AHC Medical Supplies does not have (i) any outstanding warrants, options, convertible securities and uncalled capital; and (ii) any subsidiary, associate or joint venture.

**2. Big Lucky**

Big Lucky was incorporated in Malaysia under the Companies Act 1965 on 6 February 2015 as a private limited company under its present name and is deemed registered under the Act.

The principal place of business of Big Lucky is at No. 48-0 & No. 50-0, Lorong Batu Nilam 4B, Bandar Bukit Tinggi, 41200 Klang, Selangor.

The issued share capital of Big Lucky is RM2,002,130 comprising 2,000,000 ordinary shares. There has been no change in the issued share capital of Big Lucky during the Financial Years Under Review and from 1 July 2025 up to the LPD.

As at the LPD, Big Lucky does not have (i) any outstanding warrants, options, convertible securities and uncalled capital; and (ii) any subsidiary, associate or joint venture.

**3. BIG Pharmacy Healthcare**

BIG Pharmacy Healthcare was incorporated in Malaysia under the Companies Act 1965 on 5 August 1998 as a private limited company under the name of Exquisite Healthcare Sdn Bhd and is deemed registered under the Act. On 3 November 2015, it changed its name to Redcap Pharmacy Sdn Bhd. On 31 May 2018, it changed its name and assumed its present name.

The principal place of business of BIG Pharmacy Healthcare is at 8, Jalan Astana 3/KU2, Bandar Bukit Raja, 41050 Klang, Selangor.

The issued share capital of BIG Pharmacy Healthcare is RM37,422,400 comprising 22,000,000 ordinary shares. There has been no change in the issued share capital of BIG Pharmacy Healthcare during the Financial Years Under Review and from 1 July 2025 up to the LPD.

As at the LPD, Big Pharmacy Healthcare does not have any outstanding warrants, options, convertible securities and uncalled capital.

As at the LPD, the direct subsidiaries of BIG Pharmacy Healthcare are MY Pharmacy Group and Mercury Wellness, details of which are set out in Section 6.3 of this Prospectus. Save for the above, BIG Pharmacy Healthcare does not have any subsidiary, associate or joint venture as at the LPD.

**6. INFORMATION ON OUR GROUP (Cont'd)****4. Caring**

Caring was incorporated in Malaysia under the Companies Act 1965 on 30 July 2012 as a private limited company under its present name and is deemed registered under the Act. On 24 October 2012, Caring was converted into a public limited company and was listed on the Main Market in November 2013. On 8 May 2020, Caring has been delisted and was converted into a private limited company on 23 October 2025.

The principal place of business of Caring is at 8, Jalan Astana 3/KU2, Bandar Bukit Raja, 41050 Klang, Selangor.

The issued share capital of Caring is RM225,108,316 comprising 217,706,400 ordinary shares. There has been no change in the issued share capital of Caring during the Financial Years Under Review and from 1 July 2025 up to the LPD.

As at the LPD, Caring does not have any outstanding warrants, options, convertible securities and uncalled capital.

As at the LPD, the direct subsidiary of Caring is CPRM, details of which are set out in Section 6.3 of this Prospectus. Save for the above, Caring does not have any subsidiary, associate or joint venture as at the LPD.

**5. CPRM**

CPRM was incorporated in Malaysia under the Companies Act 1965 on 26 December 2006 as a private limited company under its present name and is deemed registered under the Act.

The principal place of business of CPRM is at 8, Jalan Astana 3/KU2, Bandar Bukit Raja, 41050 Klang, Selangor.

The issued share capital of CPRM is RM46,000,000 comprising 13,660,660 ordinary shares. There has been no change in the issued share capital of CPRM during the Financial Years Under Review and from 1 July 2025 up to the LPD.

As at the LPD, CPRM does not have any outstanding warrants, options, convertible securities and uncalled capital.

As at the LPD, the direct subsidiaries of CPRM are Ace Caring, Be Caring, Big Caring Academy, Caring Abundance, Caring Alliance, Caring Clover, Caring Empire, Caring Healthmark, Caring Link, Caring 'N' You, Caring (ABM), Caring (IDR), Caring (JB Molek), Caring (KLP), Caring (MPLS), Caring (SW), Caring Ascend, Caring Rising, Caring T & T, Caring Trinity, Caring Trio, Fuji Acre, Green Surge, Mega Caring, MN Pharmacy, MY Caring, One Caring, Preciouslife Pharmacy, Stay Caring, Sterling Pharmacy, Vertex Pharmacy, Victorie Caring, Viva Caring, Living Glory, WM Caring Pharmacy, Caring Health Solutions, Caring Evergreen, JOM Pharmacy, Caring EStore, Caring Always, Caring (Ampang), Caring (Kinrara), Caring (RS), CPSB, Caring (Shah Alam), Realcare Baby and Organic, TPHP and Wellings Pharmacy; while the associate of CPRM is Data Flows, details of which are set out in Section 6.3 of this Prospectus. Save for the above, CPRM does not have any subsidiary, associate or joint venture as at the LPD.

**6. CPSB**

CPSB was incorporated in Malaysia under the Companies Act 1965 on 21 April 1994 as a private limited company under its present name and is deemed registered under the Act.

The principal place of business of CPSB is at 8, Jalan Astana 3/KU2, Bandar Bukit Raja, 41050 Klang, Selangor.

## 6. INFORMATION ON OUR GROUP (Cont'd)

The issued share capital of CPSB is RM2,500,000 comprising 2,500,000 ordinary shares. There has been no change in the issued share capital of CPSB during the Financial Years Under Review and from 1 July 2025 up to the LPD.

As at the LPD, CPSB does not have (i) any outstanding warrants, options, convertible securities and uncalled capital; and (ii) any subsidiary, associate or joint venture.

## 7. Medispec

Medispec was incorporated in Malaysia under the Companies Act 1965 on 21 March 1985 as a private limited company under the name of Medispec Sdn Bhd and is deemed registered under the Act. On 1 October 1985, it changed its name and assumed its present name.

The principal place of business of Medispec is at Bangunan Medispec, B-1-07, Block B, Jalan SS 25/22, Mayang Avenue, Taman Mayang, 47301 Petaling Jaya, Selangor.

The issued share capital of Medispec is RM1,000,000 comprising 1,000,000 ordinary shares. There has been no change in the issued share capital of Medispec during the Financial Years Under Review and from 1 July 2025 up to the LPD.

As at the LPD, Medispec does not have any outstanding warrants, options, convertible securities and uncalled capital.

As at the LPD, the direct subsidiaries of Medispec are Vitamode and Medispec (S), details of which are set out in Section 6.3 of this Prospectus. Save for the above, Medispec does not have any subsidiary, associate or joint venture as at the LPD.

## 8. Mercury Wellness

Mercury Wellness was incorporated in Malaysia under the Act on 25 January 2021 as a private limited company under its present name.

Mercury Wellness is principally engaged in investment holding, wholesaling and retailing of pharmaceutical product as well as retail sale of rice. The principal place of business of Mercury Wellness is at No. 63, Jalan Temerloh, 28400 Mentakab, Pahang.

The issued share capital of Mercury Wellness is RM12,021,600 comprising 12,021,600 ordinary shares. There has been no change in the issued share capital of Mercury Wellness during the Financial Years Under Review and from 1 July 2025 up to the LPD.

As at the LPD, Mercury Wellness does not have any outstanding warrants, options, convertible securities and uncalled capital, save for the option granted by BIG Pharmacy Healthcare to Mercury Ventures Sdn Bhd ("**MVSB**") to sell up to 10.0% of MVSB's shares in Mercury Wellness or such other percentage as mutually agreed by the shareholders (i.e. up to 49.0% of shares in Mercury Wellness held by MVSB) ("**Option Shares**") to BIG Pharmacy Healthcare upon our Listing ("**Mercury Put Option**"). The option price under the Mercury Put Option will be based on the stakes percentage of the Option Shares multiplied by 15.0 times of the consolidated audited PATAMI, as adjusted to exclude items of a non-recurring nature such as goodwill, extraordinary gains or losses, and gains or losses from the sale of property and other non-pharmacy related businesses of Mercury Wellness' group of companies for the financial year end immediately preceding the time of the exercise of the Mercury Put Option. The Mercury Put Option is only exercisable during the six-month period prior to our Listing. Notwithstanding the foregoing, MVSB has on 8 January 2026 irrevocably and unconditionally undertaken to not exercise the Mercury Put Option at any time prior to the completion of our Listing, and acknowledged and agreed that the Mercury Put Option, if exercised, may only be exercised following the completion of our Listing.

**6. INFORMATION ON OUR GROUP (Cont'd)**

As at the LPD, the direct subsidiaries of Mercury Wellness are MP Wellness, MP Baitul Salam, MYGS Venture, G&A Pharma, G&T Pharma and GM Pharma, details of which are set out in Section 6.3 of this Prospectus. Save for the above, Mercury Wellness does not have any subsidiary, associate or joint venture as at the LPD.

**9. MY Pharmacy Group**

MY Pharmacy Group was incorporated in Malaysia under the Companies Act 1965 on 22 May 2014 as a private limited company under the name of Life Plus Pharmacy Sdn Bhd and is deemed registered under the Act. On 12 November 2019, it changed and assumed its current name.

The principal place of business of MY Pharmacy Group is at PLO 59 No. 3, Jalan Firma 2/3, Kawasan Perindustrian Tebrau 1, 81100 Johor Bahru, Johor.

The issued share capital of MY Pharmacy Group is RM24,045,645 comprising 24,045,645 ordinary shares. There has been no change in the issued share capital of MY Pharmacy Group during the Financial Years Under Review and from 1 July 2025 up to the LPD.

As at the LPD, MY Pharmacy Group does not have any outstanding warrants, options, convertible securities and uncalled capital.

As at the LPD, the direct subsidiaries of MY Pharmacy Group are MY (M) and MY (Sentosa), details of which are set out in Section 6.3 of this Prospectus. Save for the above, MY Pharmacy Group does not have any subsidiary, associate or joint venture as at the LPD.

**10. Quantum Upstream**

Quantum Upstream was incorporated in Malaysia under the Companies Act 1965 on 8 April 2014 as a private limited company under its present name and is deemed registered under the Act.

The principal place of business of Quantum Upstream is at No. 66A-2 Jalan Cerdas, Taman Connaught Cheras, 56000 Kuala Lumpur, Wilayah Persekutuan Kuala Lumpur.

The issued share capital of Quantum Upstream is RM3,000 comprising 3,000 ordinary shares. Save as disclosed below, there has been no change in the issued share capital of Quantum Upstream during the Financial Years Under Review and from 1 July 2025 up to the LPD:

<b>Date of allotment</b>	<b>No. of shares</b>	<b>Consideration</b>	<b>Cumulative issued share capital (RM)</b>
3 April 2025	2,998	Cash	3,000

As at the LPD, Quantum Upstream does not have any outstanding warrants, options, convertible securities and uncalled capital.

As at the LPD, the direct subsidiary of Quantum Upstream is Yanling Assets, details of which are set out in Section 6.3 of this Prospectus. Save for the above, Quantum Upstream does not have any subsidiary, associate or joint venture as at the LPD.

**6. INFORMATION ON OUR GROUP (Cont'd)****11. TPHP**

TPHP was incorporated in Malaysia under the Companies Act 1965 on 10 September 2009 as a private limited company under its present name and is deemed registered under the Act.

The principal place of business of TPHP is at 20-02-15, Garden Ville, Lintang Sungai Ara 7, 11900 Bayan Lepas, Pulau Pinang.

The issued share capital of TPHP is RM7,423,216 comprising 783,194 ordinary shares. There has been no change in the issued share capital of TPHP during the Financial Years Under Review and from 1 July 2025 up to the LPD.

As at the LPD, TPHP does not have any outstanding warrants, options, convertible securities and uncalled capital.

As at the LPD, the direct subsidiary of TPHP is Wellings Pill House, details of which are set out in Section 6.3 of this Prospectus. Save for the above, TPHP does not have any subsidiary, associate or joint venture as at the LPD.

**12. Ting Pharmacy**

Ting Pharmacy was incorporated in Malaysia under the Act on 18 January 2023 as a private limited company under its present name.

The principal place of business of Ting Pharmacy is at No. 23, Lot 101, Ground Floor, Block 233, KNLD, Pekan Batu 7 (Kota Sentosa), 93250 Kuching, Sarawak.

The issued share capital of Ting Pharmacy is RM9,348,922 comprising 1,000,100 ordinary shares. Save as disclosed below, there has been no change in the issued share capital of Ting Pharmacy during the Financial Years Under Review and from 1 July 2025 up to the LPD:

<u>Date of allotment</u>	<u>No. of shares</u>	<u>Consideration</u>	<u>Cumulative issued share capital (RM)</u>
18 July 2023	674,979	Otherwise than cash	5,953,415
18 July 2023	24,849	Otherwise than cash	6,277,943
18 July 2023	38,078	Otherwise than cash	6,776,003
18 July 2023	30,329	Otherwise than cash	7,287,350
18 July 2023	10,000	Otherwise than cash	7,671,750
18 July 2023	32,242	Otherwise than cash	8,024,155
18 July 2023	24,138	Otherwise than cash	8,361,363
18 July 2023	31,363	Otherwise than cash	8,700,710
18 July 2023	30,135	Otherwise than cash	9,198,842
18 July 2023	47,708	Otherwise than cash	9,681,170
18 July 2023	29,727	Otherwise than cash	10,134,209
18 July 2023	26,452	Otherwise than cash	10,344,767 <sup>(1)</sup>

**Note:**

- (1) Pursuant to the capital reduction exercise on 23 April 2024, the share capital of Ting Pharmacy has been reduced from RM10,344,767 to RM9,348,922.

As at the LPD, Ting Pharmacy does not have (i) any outstanding warrants, options, convertible securities and uncalled capital; and (ii) any subsidiary, associate or joint venture.

**6. INFORMATION ON OUR GROUP (Cont'd)****13. Wellings Pharmacy**

Wellings Pharmacy was incorporated in Malaysia under the Companies Act 1965 on 3 August 2007 as a private limited company under its present name and is deemed registered under the Act.

The principal place of business of Wellings Pharmacy is at No. 368-1-12, 12A, 14 & 15, Bellisa Row, Jalan Burma, Pulau Tikus, 10350 Georgetown, Pulau Pinang.

The issued share capital of Wellings Pharmacy is RM1,000,000 comprising 1,000,000 ordinary shares. There has been no change in the issued share capital of Wellings Pharmacy during the Financial Years Under Review and from 1 July 2025 up to the LPD.

As at the LPD, Wellings Pharmacy does not have any outstanding warrants, options, convertible securities and uncalled capital.

As at the LPD, the direct subsidiary of Wellings Pharmacy is Wellings Selat, details of which are set out in Section 6.3 of this Prospectus. Save for the above, Wellings Pharmacy does not have any subsidiary, associate or joint venture as at the LPD.

**14. Yanling Assets**

Yanling Assets was incorporated in Malaysia under the Act on 10 August 2023 as a private limited company under its present name.

The principal place of business of Yanling Assets is at 8, Jalan Astana 3/KU2, Bandar Bukit Raja, 41050 Klang, Selangor.

The issued share capital of Yanling Assets is RM57,201,000 comprising 57,201,000 ordinary shares. Save as disclosed below, there has been no change in the issued share capital of Yanling Assets during the Financial Years Under Review and from 1 July 2025 up to the LPD:

<b>Date of allotment</b>	<b>No. of shares</b>	<b>Consideration</b>	<b>Cumulative issued share capital (RM)</b>
26 September 2023	999	Cash	1,000
4 December 2023	8,509,500	Cash	8,510,500
4 December 2023	46,390,500	Otherwise than cash	54,901,000
27 February 2025	2,300,000	Cash	57,201,000

As at the LPD, Yanling Assets does not have any outstanding warrants, options, convertible securities and uncalled capital.

As at the LPD, the direct subsidiary of Yanling Assets is Yanling Holdings, details of which are set out in Section 6.3 of this Prospectus. Save for the above, Yanling Assets does not have any subsidiary, associate or joint venture as at the LPD.

**15. Yanling Natural Hygiene**

Yanling Natural Hygiene was incorporated in Malaysia under the Companies Act 1965 on 29 October 1994 as a private limited company under its present name and is deemed registered under the Act.

The principal place of business of Yanling Natural Hygiene is at No. 16 & 18, Jalan SB Jaya 11, Taman Industri SB Jaya, 47000 Sungai Buloh, Selangor.

The issued share capital of Yanling Natural Hygiene is RM500,000 comprising 500,000 ordinary shares. There has been no change in the issued share capital of Yanling Natural Hygiene during the Financial Years Under Review and from 1 July 2025 up to the LPD.

---

**6. INFORMATION ON OUR GROUP (Cont'd)**

---

As at the LPD, Yanling Natural Hygiene does not have (i) any outstanding warrants, options, convertible securities and uncalled capital; and (ii) any subsidiary, associate or joint venture.

Save as disclosed in Section 6.3 of this Prospectus, our Subsidiaries do not have any outstanding warrants, options, convertible securities and uncalled capital.

**6.4 PUBLIC TAKE-OVERS**

During the last financial year and from 1 July 2025 up to the LPD, there were no:

- (i) public take-over offers by third parties in respect of our Shares; and
- (ii) public take-over offers by our Company in respect of other companies' securities.