




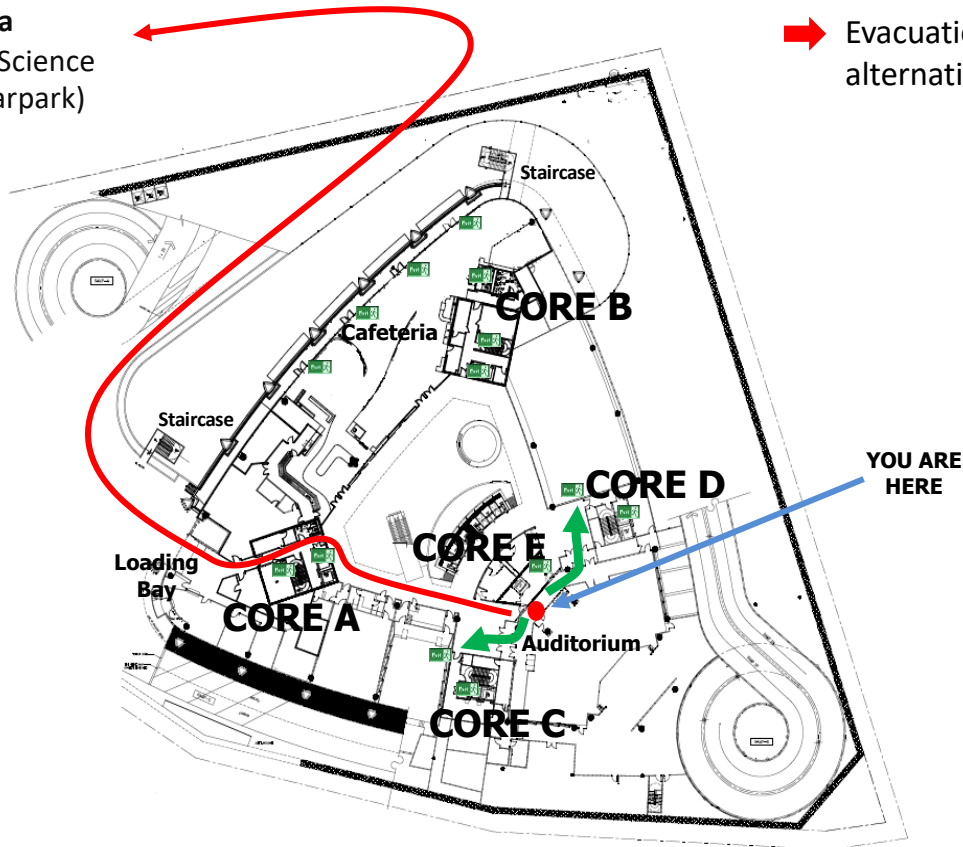
In Case of Emergency

Evacuation Route

(Auditorium, Lower Ground 1)

-  Exit sign
-  Evacuation route to the nearest emergency exits
-  Evacuation route to the alternative emergency exits

Emergency Assembly Area
(National Science Centre Carpark)



EVACUATION

- Upon hearing the fire alarm, wait for further instructions before commencing to leave the building.
- Once the instruction is given for evacuation, collect only essential items.
- Do not use the lifts. Proceed to the nearest exit and make your way out.
- If the nearest exit is inaccessible, then move to the other alternative exits.
- Make your way to the emergency assembly area located at the open carpark of the National Science Centre.

ALERT




- If you notice any incident that may threaten yours and your colleagues' well-being, please call the SC Hotline immediately at 03-62048886/8887.
- Remain calm, state your full name and location, describe the emergency and follow the instructions from the SC Hotline.

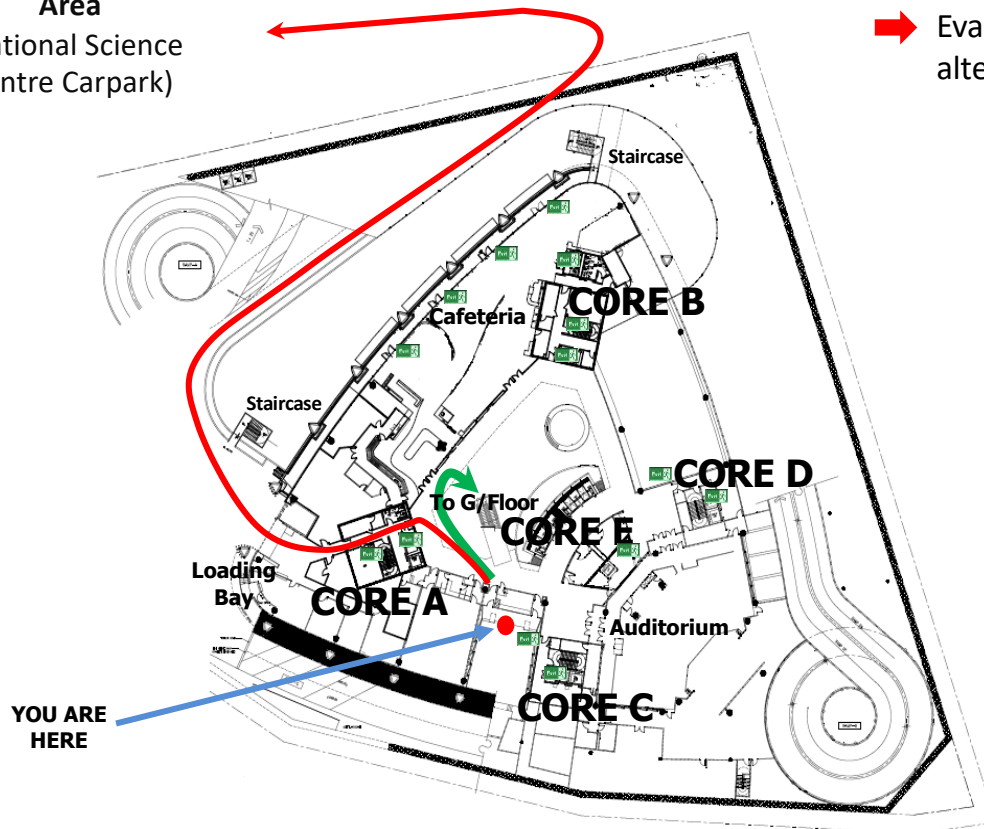
In Case of Emergency

Evacuation Route

(Lecture Theatre, Lower Ground 1)

Emergency Assembly Area
(National Science Centre Carpark)

-  Exit sign
-  Evacuation route to the nearest emergency exits
-  Evacuation route to the alternative emergency exits



EVACUATION

- Upon hearing the fire alarm, wait for further instructions before commencing to leave the building.
- Once the instruction is given for evacuation, collect only essential items.
- Do not use the lifts. Proceed to the nearest exit and make your way out.
- If the nearest exit is inaccessible, then move to the other alternative exits.
- Make your way to the emergency assembly area located at the open carpark of the National Science Centre.

ALERT




- If you notice any incident that may threaten yours and your colleagues' well-being, please call the SC Hotline immediately at 03-62048886/8887.
- Remain calm, state your full name and location, describe the emergency, and follow the instructions from the SC Hotline.

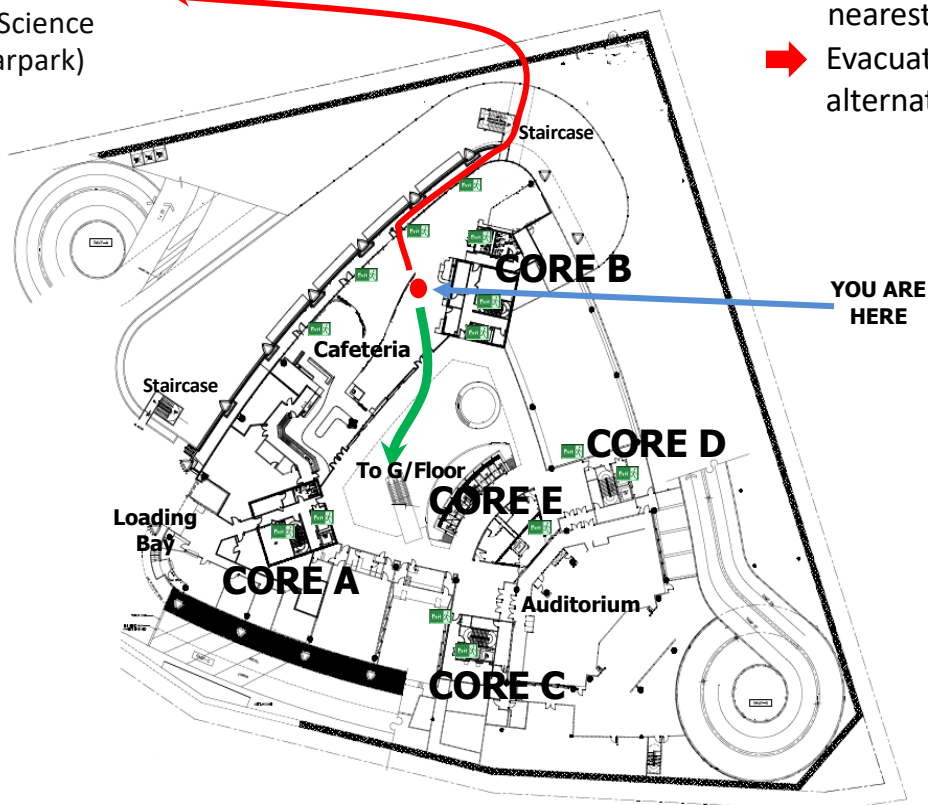
In Case of Emergency

Evacuation Route

(Cafeteria, Lower Ground 1)

Emergency Assembly Area
(National Science Centre Carpark)

-  Exit sign
-  Evacuation route to the nearest emergency exits
-  Evacuation route to the alternative emergency exits



EVACUATION

- Upon hearing the fire alarm, wait for further instructions before commencing to leave the building.
- Once the instruction is given for evacuation, collect only essential items.
- Do not use the lifts. Proceed to the nearest exit and make your way out.
- If the nearest exit is inaccessible, then move to the other alternative exits.
- Make your way to the emergency assembly area located at the open carpark of the National Science Centre.

ALERT




- If you notice any incident that may threaten yours and your colleagues' well-being, please call the SC Hotline immediately at 03-62048886/8887.
- Remain calm, state your full name and location, describe the emergency, and follow the instructions from the SC Hotline.

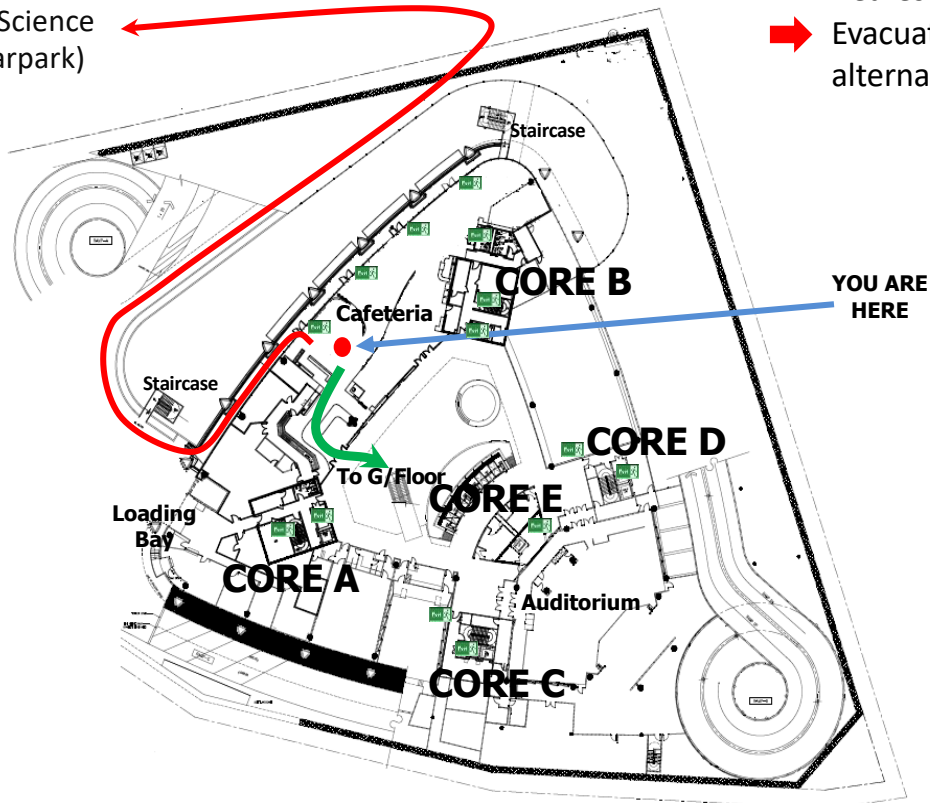
In Case of Emergency

Evacuation Route

(Cafeteria, Lower Ground 1)

Emergency Assembly Area
(National Science Centre Carpark)

-  Exit sign
-  Evacuation route to the nearest emergency exits
-  Evacuation route to the alternative emergency exits



EVACUATION

- Upon hearing the fire alarm, wait for further instructions before commencing to leave the building.
- Once the instruction is given for evacuation, collect only essential items.
- Do not use the lifts. Proceed to the nearest exit and make your way out.
- If the nearest exit is inaccessible, then move to the other alternative exits.
- Make your way to the emergency assembly area located at the open carpark of the National Science Centre.

ALERT

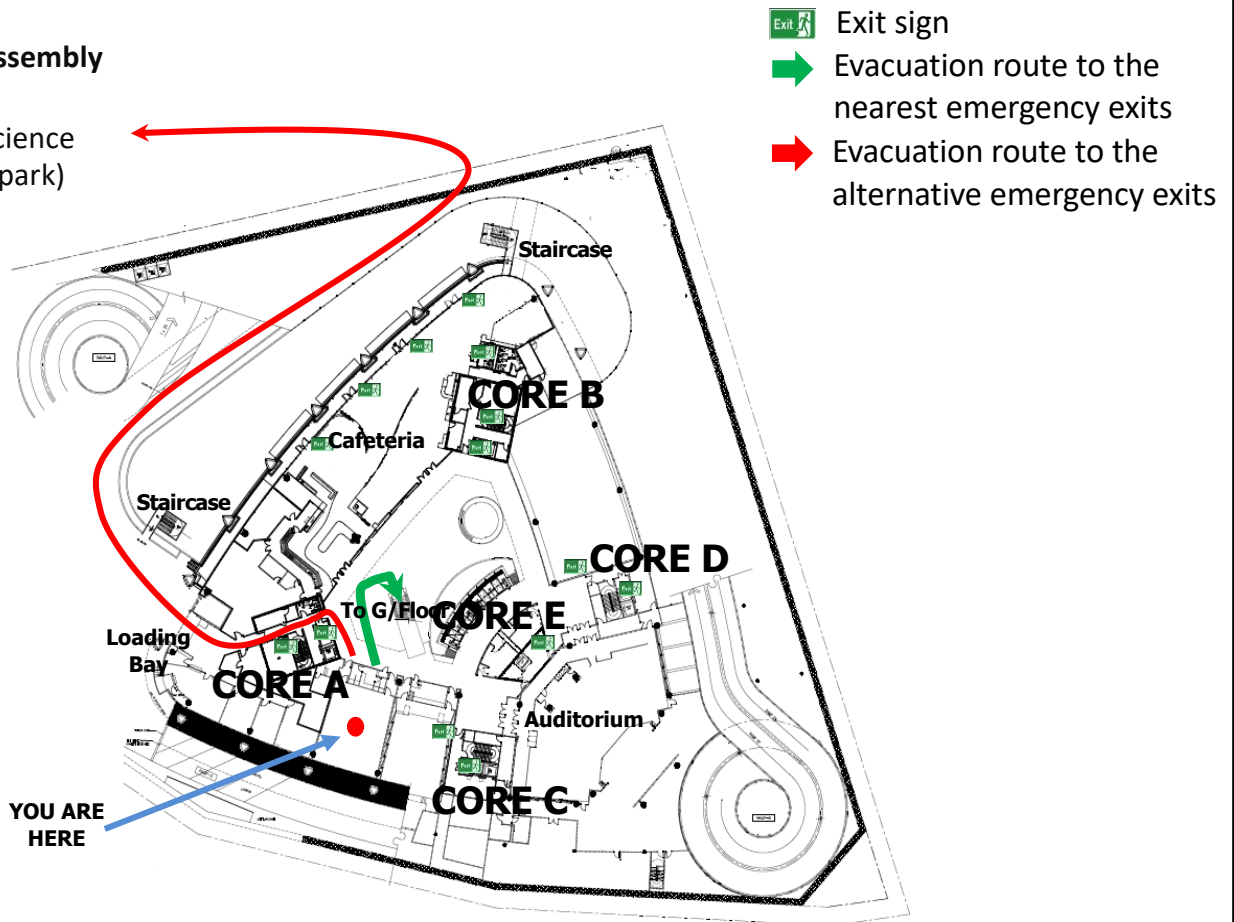
- If you notice any incident that may threaten yours and your colleagues' well-being, please call the SC Hotline immediately at 03-62048886/8887.
- Remain calm, state your full name and location, describe the emergency, and follow the instructions from the SC Hotline.

In Case of Emergency

Evacuation Route

(Brain Storming Room, Lower Ground 1)

Emergency Assembly Area
(National Science Centre Carpark)



EVACUATION

- Upon hearing the fire alarm, wait for further instructions before commencing to leave the building.
- Once the instruction is given for evacuation, collect only essential items.
- Do not use the lifts. Proceed to the nearest exit and make your way out.
- If the nearest exit is inaccessible, then move to the other alternative exits.
- Make your way to the emergency assembly area located at the open carpark of the National Science Centre.

ALERT



- If you notice any incident that may threaten yours and your colleagues' well-being, please call the SC Hotline immediately at 03-62048886/8887.
- Remain calm, state your full name and location, describe the emergency and follow the instructions from the SC Hotline.

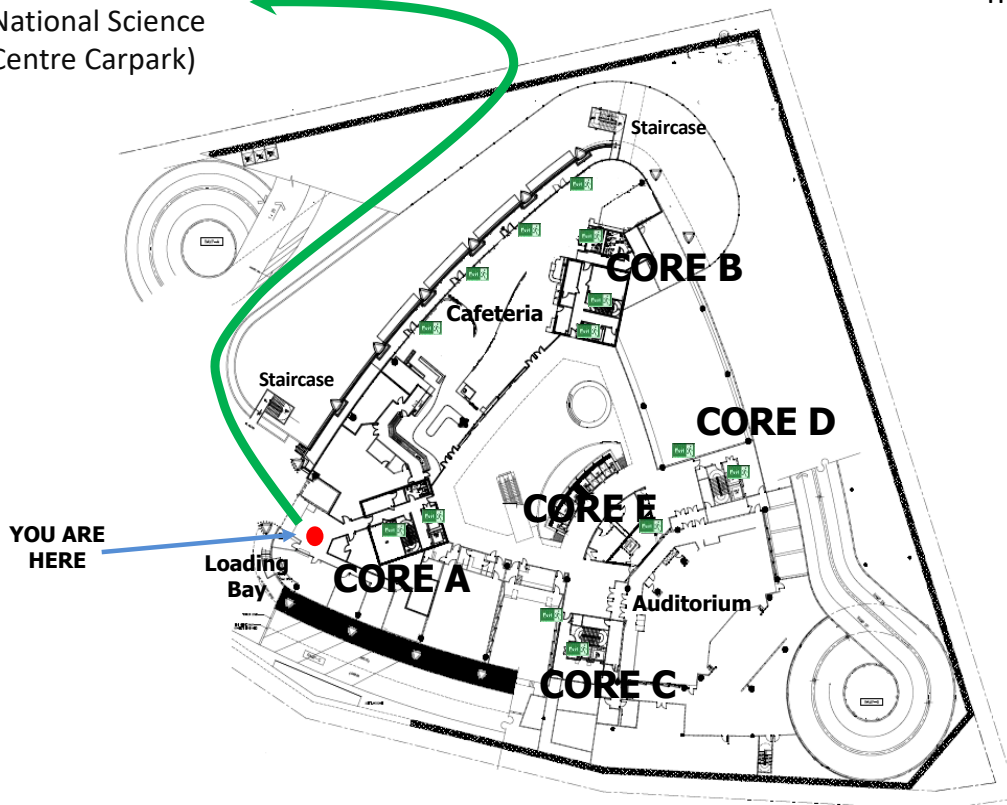
In Case of Emergency

Evacuation Route

(Loading Bay, Lower Ground 1)

Emergency Assembly Area
(National Science Centre Carpark)

 Exit sign
 Evacuation route to the nearest emergency exits



EVACUATION

- Upon hearing the fire alarm, wait for further instructions before commencing to leave the building.
- Once the instruction is given for evacuation, collect only essential items.
- Do not use the lifts. Proceed to the nearest exit and make your way out.
- If the nearest exit is inaccessible, then move to the other alternative exits.
- Make your way to the emergency assembly area located at the open carpark of the National Science Centre.

ALERT

- If you notice any incident that may threaten yours and your colleagues' well-being, please call the SC Hotline immediately at 03-62048886/8887.
- Remain calm, state your full name and location, describe the emergency, and follow the instructions from the SC Hotline.