

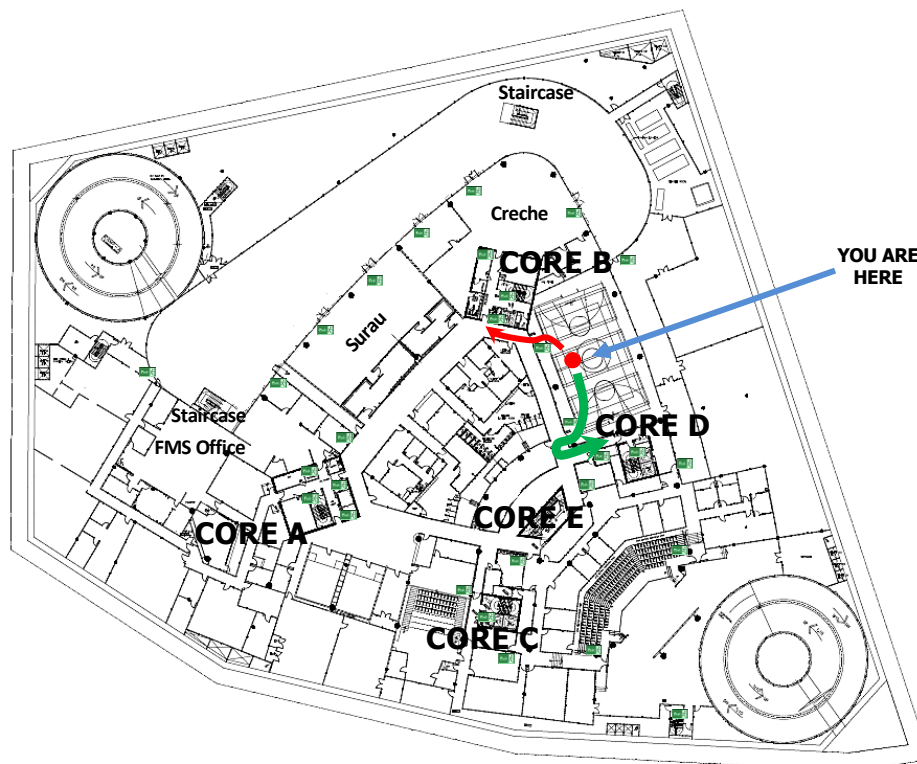


In Case of Emergency

Evacuation Route

(Multi Purpose Hall Area, Lower Ground 2)

-  Exit sign
-  Evacuation route to the nearest emergency exits



EVACUATION

- Upon hearing the fire alarm, wait for further instructions before commencing to leave the building.
- Once the instruction is given for evacuation, collect only essential items.
- Do not use the lifts. Proceed to the nearest exit to take staircase and make your way up to the Ground Floor exits.
- If the nearest exit is inaccessible, then move to other alternative exits.
- Make your way to the emergency assembly area located at the open carpark of the National Science Centre.




ALERT

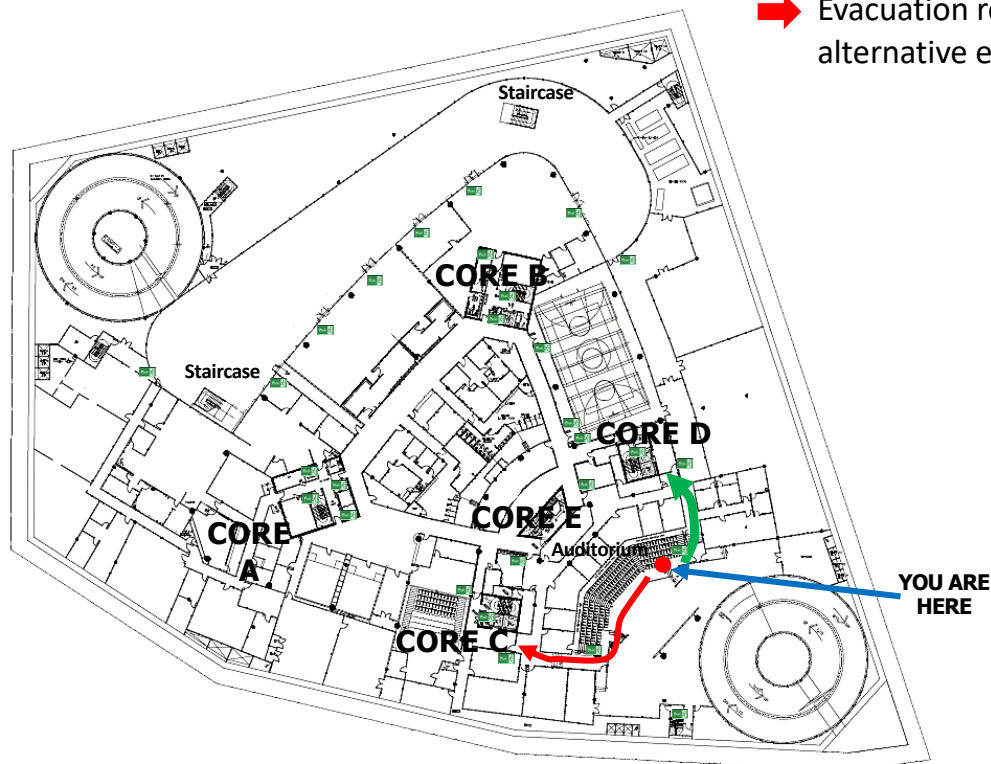
- If you notice any incident that may threaten yours and your colleagues' well-being, please call the SC Hotline immediately at 03-62048886/8887.
- Remain calm, state your full name and location, describe the emergency, and follow instructions from the SC Hotline.

In Case of Emergency

Evacuation Route

(Auditorium, Lower Ground 2)

-  Exit sign
-  Evacuation route to the nearest emergency exits
-  Evacuation route to the alternative emergency exits



EVACUATION

- Upon hearing the fire alarm, wait for further instructions before commencing to leave the building.
- Once the instruction is given for evacuation, collect only essential items.
- Do not use the lifts. Proceed to the nearest exit to take staircase and make your way up to the Ground Floor exits.
- If the nearest exit is inaccessible, then move to other alternative exits.
- Make your way to the emergency assembly area located at the open carpark of the National Science Centre.




ALERT

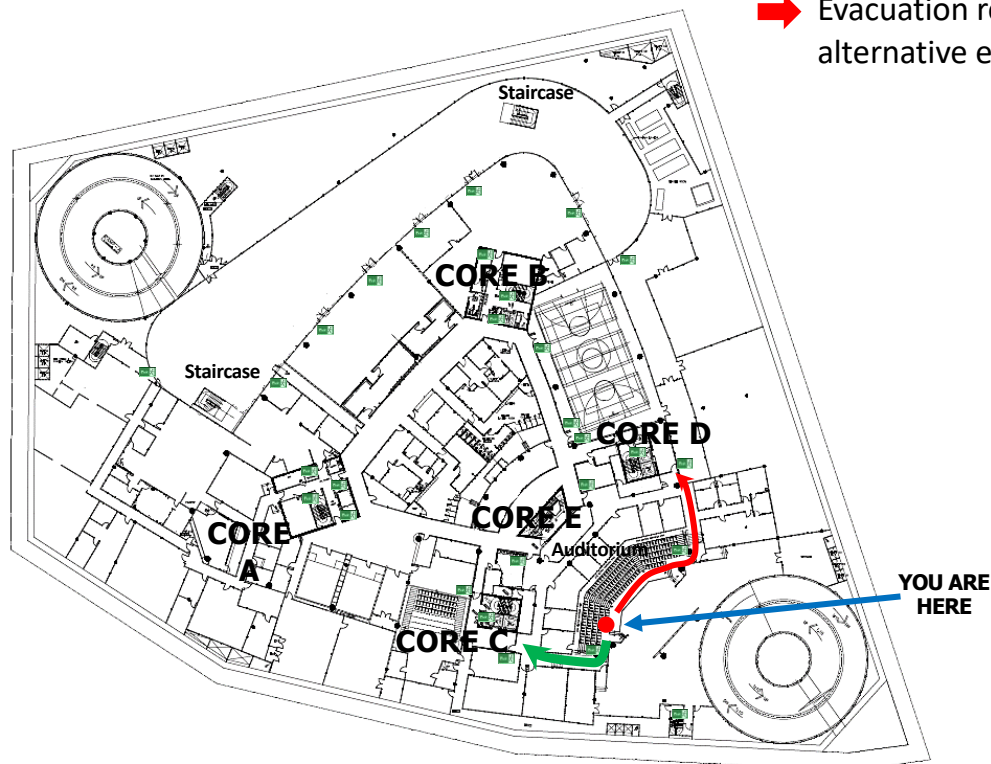
- If you notice any incident that may threaten yours and your colleagues' well-being, please call the SC Hotline immediately at 03-62048886/8887.
- Remain calm, state your full name and location, describe the emergency, and follow instructions from the SC Hotline.

In Case of Emergency

Evacuation Route

(Auditorium, Lower Ground 2)

-  Exit sign
-  Evacuation route to the nearest emergency exits
-  Evacuation route to the alternative emergency exits



EVACUATION

- Upon hearing the fire alarm, wait for further instructions before commencing to leave the building.
- Once the instruction is given for evacuation, collect only essential items.
- Do not use the lifts. Proceed to the nearest exit to take staircase and make your way up to the Ground Floor exits.
- If the nearest exit is inaccessible, then move to other alternative exits.
- Make your way to the emergency assembly area located at the open carpark of the National Science Centre.



ALERT

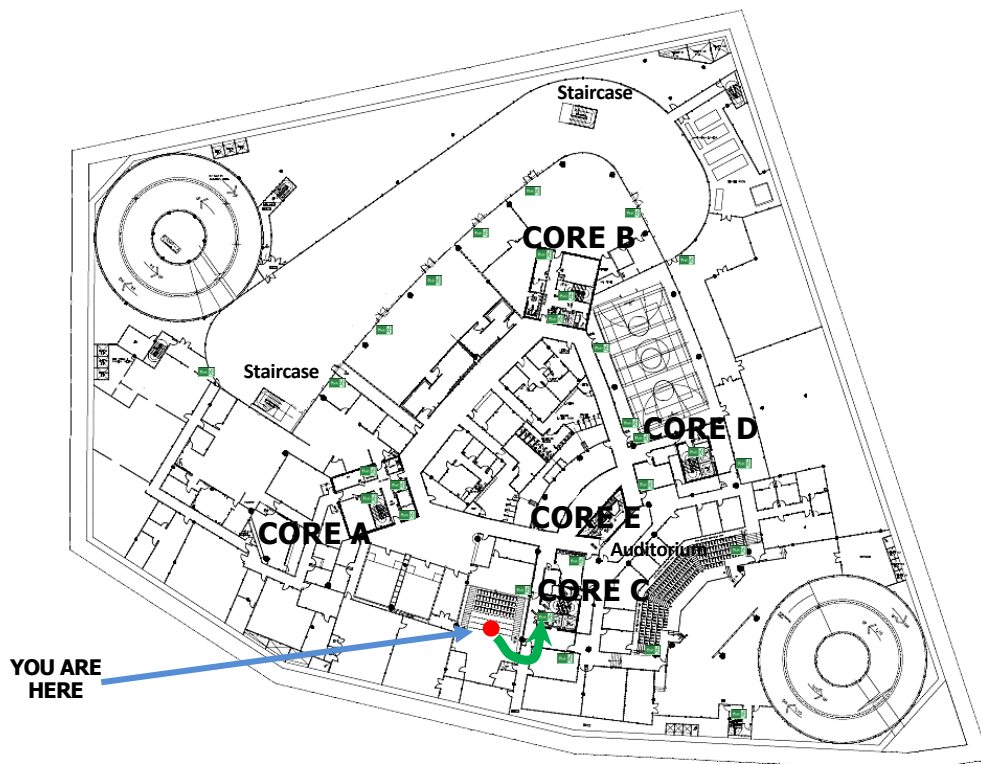
- If you notice any incident that may threaten yours and your colleagues' well-being, please call the SC Hotline immediately at 03-62048886/8887.
- Remain calm, state your full name and location, describe the emergency, and follow instructions from the SC Hotline.

In Case of Emergency

Evacuation Route

(Lecture Theatre, Lower Ground 2)

-  Exit sign
-  Evacuation route to the nearest emergency exits



EVACUATION

- Upon hearing the fire alarm, wait for further instructions before commencing to leave the building.
- Once the instruction is given for evacuation, collect only essential items.
- Do not use the lifts. Proceed to the nearest exit to take staircase and make your way up to the Ground Floor exits.
- If the nearest exit is inaccessible, then move to other alternative exits.
- Make your way to the emergency assembly area located at the open carpark of the National Science Centre.

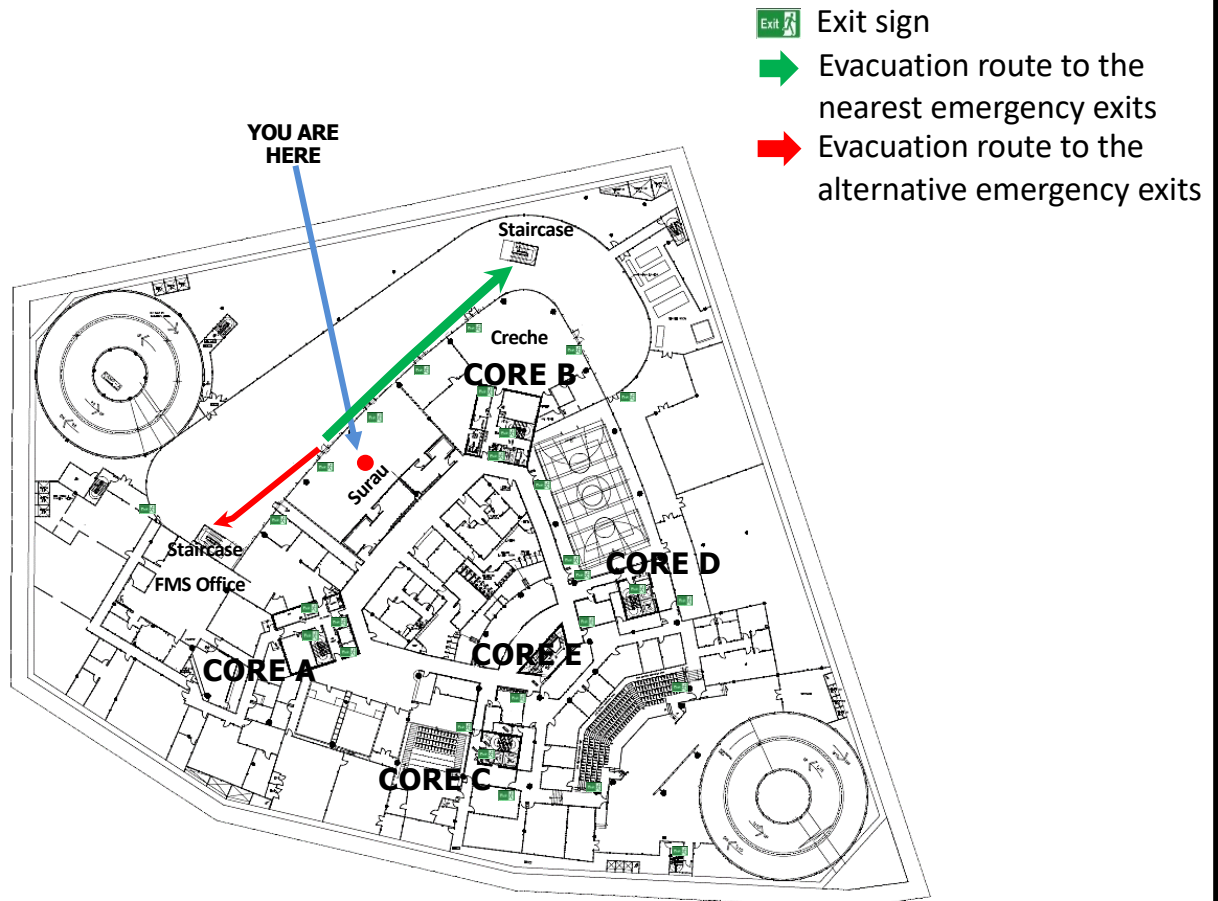
ALERT

- If you notice any incident that may threaten yours and your colleagues' well-being, please call the SC Hotline immediately at 03-62048886/8887.
- Remain calm, state your full name and location, describe the emergency, and follow instructions from the SC Hotline.

In Case of Emergency

Evacuation Route

(Male Surau, Lower Ground 2)



EVACUATION

- Upon hearing the fire alarm, wait for further instructions before commencing to leave the building.
- Once the instruction is given for evacuation, collect only essential items.
- Do not use the lifts. Proceed to the nearest exit to take staircase and make your way up to the Ground Floor exits.
- If the nearest exit is inaccessible, then move to other alternative exits.
- Make your way to the emergency assembly area located at the open carpark of the National Science Centre.

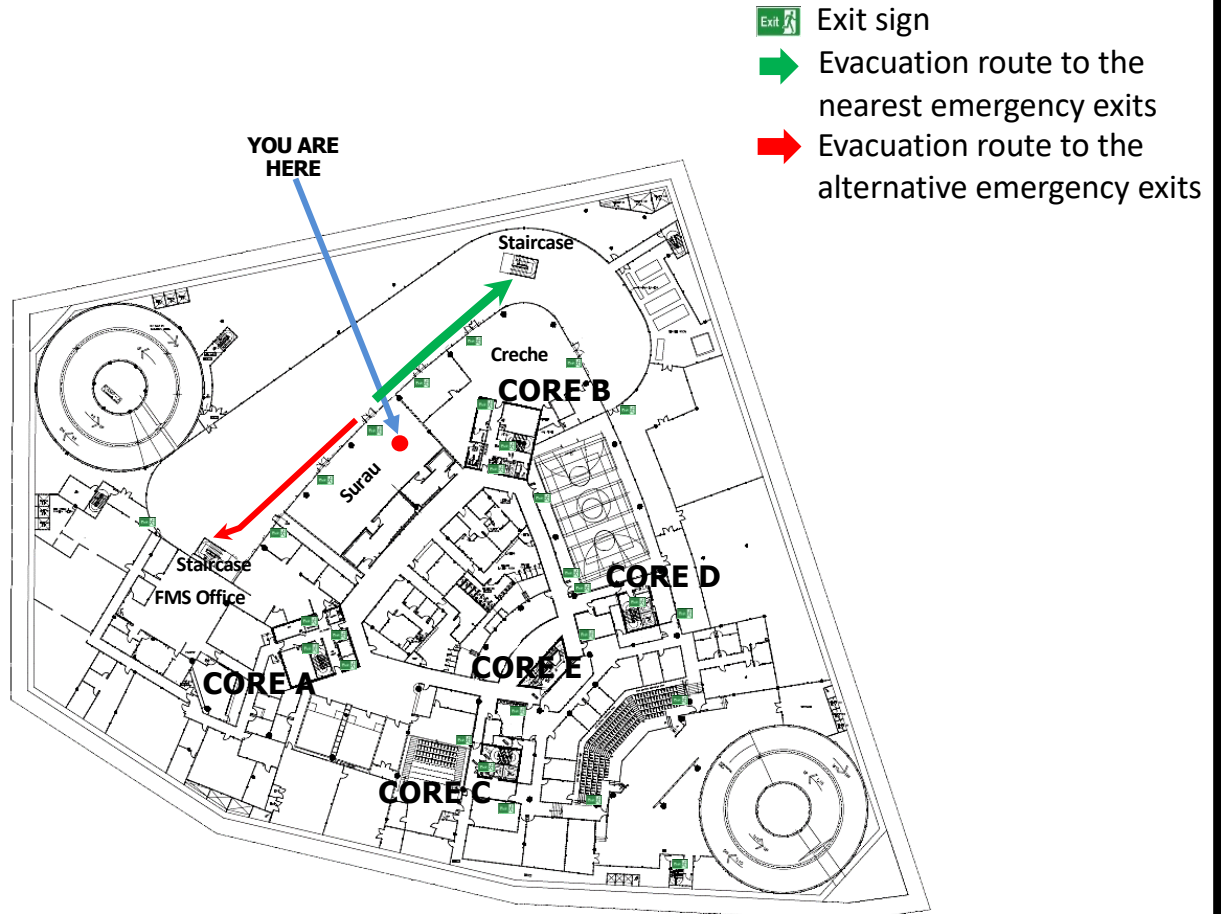
ALERT

- If you notice any incident that may threaten yours and your colleagues' well-being, please call the SC Hotline immediately at 03-62048886/8887.
- Remain calm, state your full name and location, describe the emergency and follow instructions from the SC Hotline.

In Case of Emergency

Evacuation Route

(Female Surau, Lower Ground 2)



EVACUATION

- Upon hearing the fire alarm, wait for further instructions before commencing to leave the building.
- Once the instruction is given for evacuation, collect only essential items.
- Do not use the lifts. Proceed to the nearest exit to take staircase and make your way up to the Ground Floor exits.
- If the nearest exit is inaccessible, then move to other alternative exits.
- Make your way to the emergency assembly area located at the open carpark of the National Science Centre.



ALERT

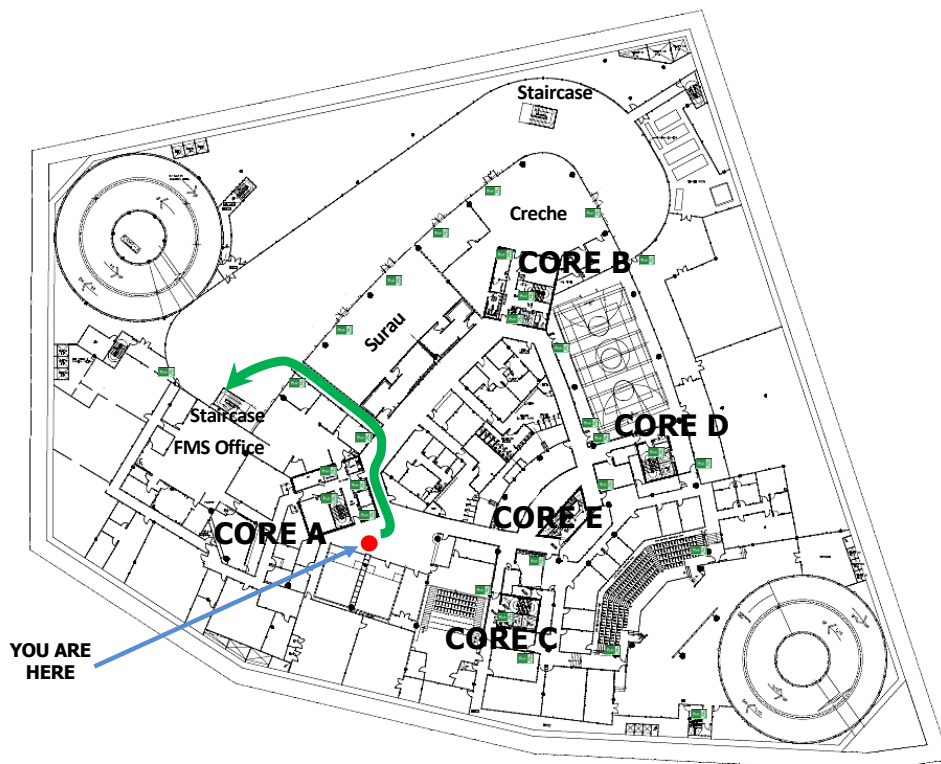
- If you notice any incident that may threaten yours and your colleagues' well-being, please call the SC Hotline immediately at 03-62048886/8887.
- Remain calm, state your full name and location, describe the emergency, and follow instructions from the SC Hotline.

In Case of Emergency

Evacuation Route

(Gymnasium & Squash Area, Lower Ground 2)

-  Exit sign
-  Evacuation route to the nearest emergency exits



EVACUATION

- Upon hearing the fire alarm, wait for further instructions before commencing to leave the building.
- Once the instruction is given for evacuation, collect only essential items.
- Do not use the lifts. Proceed to the nearest exit to take staircase and make your way up to the Ground Floor exits.
- If the nearest exit is inaccessible, then move to other alternative exits.
- Make your way to the emergency assembly area located at the open carpark of the National Science Centre.



ALERT

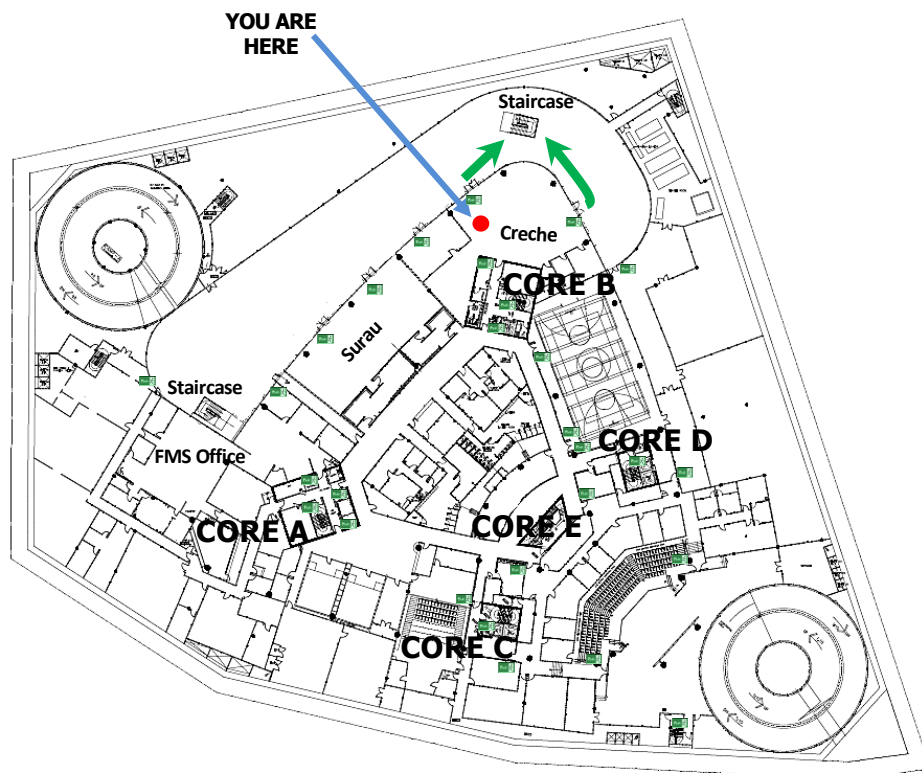
- If you notice any incident that may threaten yours and your colleagues' well-being, please call the SC Hotline immediately at 03-62048886/8887.
- Remain calm, state your full name and location, describe the emergency, and follow instructions from the SC Hotline.

In Case of Emergency

Evacuation Route

(Creche, Lower Ground 2)

-  Exit sign
-  Evacuation route to the nearest emergency exits



EVACUATION

- Upon hearing the fire alarm, wait for further instructions before commencing to leave the building.
- Once the instruction is given for evacuation, collect only essential items.
- Do not use the lifts. Proceed to the nearest exit to take staircase and make your way up to the Ground Floor exits.
- If the nearest exit is inaccessible, then move to other alternative exits.
- Make your way to the emergency assembly area located at the open carpark of the National Science Centre.

ALERT

- If you notice any incident that may threaten yours and your colleagues' well-being, please call the SC Hotline immediately at 03-62048886/8887.
- Remain calm, state your full name and location, describe the emergency, and follow instructions from the SC Hotline.